

ATS&R



Lincoln Elementary Community Meeting

April 21, 2008

Agenda...

- Introduction
- Approach to Evaluation
- Building utilization review
- Small group activity
- Reporting / Prioritization

ATS&R Background- School Specialists

- 63 Years as school specialists
- 98% of workload is PreK-12 schools
- Staff of 84 with in-house services:
 - Pre-Referendum Planning
 - Facilities Master Planning
 - Architectural
 - Mechanical/ Electrical
 - LEED Certification
 - Technology
 - Site Development
 - Construction Administration
 - Interior Design
 - Specifications/ Quality Control
 - Total Energy Checkpoint
- National Exposure
 - School Experience Nationally and Internationally
 - CEFPI-AASA-ASBO-NSBA-ITTE-CSI-NASSP
 - Recognized Presenters/Authors



District 303 Vision Statement

C.U.S.D 303
St. Charles School District

“The District 303 School Community empowers and inspires ALL to

- Attain excellence
- Learn with passion, and
- Live with integrity in a changing world.”

Agenda...

- Introduction
- **Approach to Evaluation**
- Building utilization review
- Small group activity
- Reporting / Prioritization

Approach to Evaluation

- Comprehensive assessment of all schools
- Community group involvement
- Developing a Master Facilities Plan



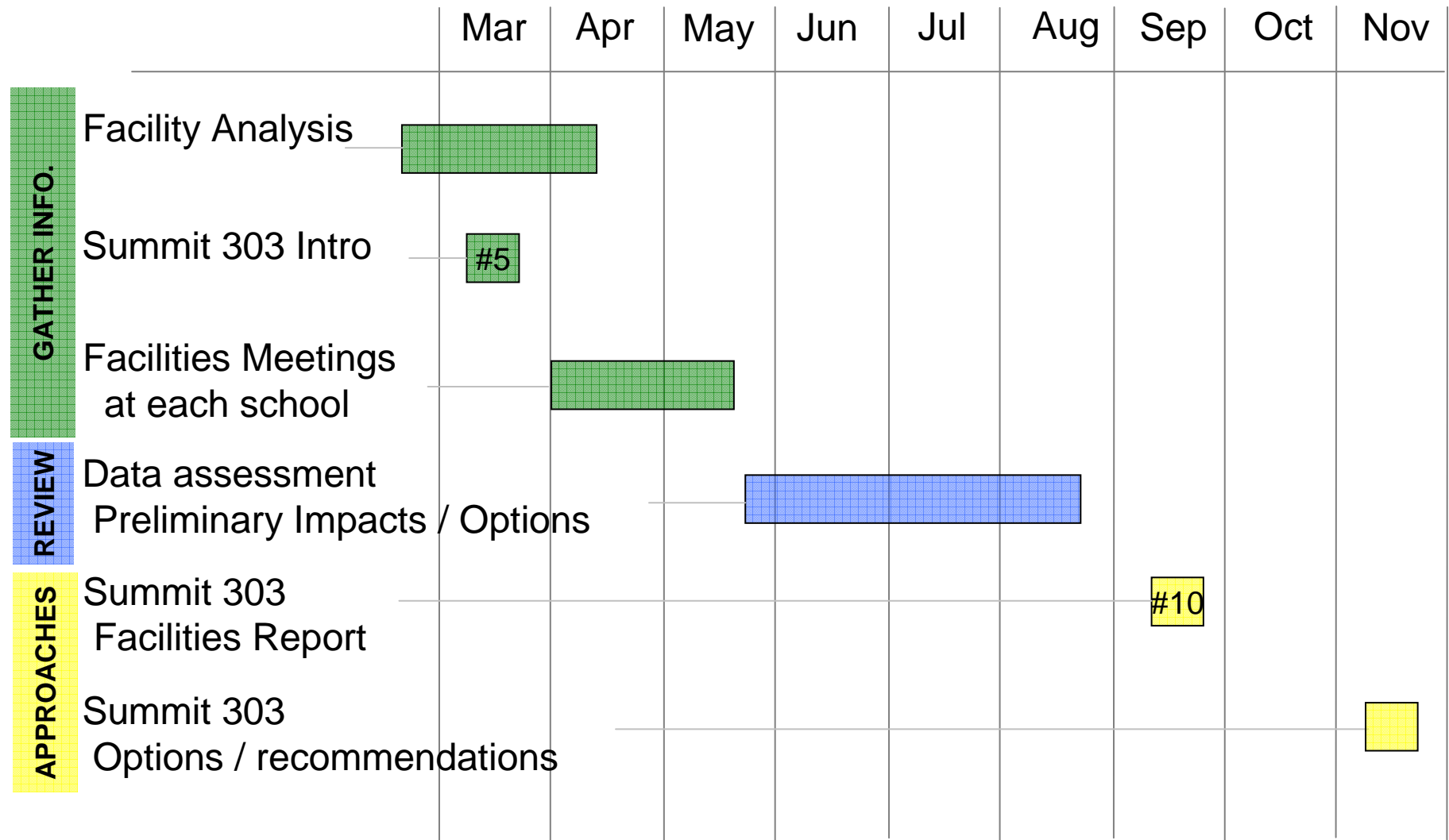
Develop a Master Facilities Plan

Providing a solid foundation for the Master Plan

- Supported by the assessment and community engagement process
- Responds to research on demographics, space, etc.
- Open, honest communication with the community
- Guide for planning and improvement projects for the next 20 years



Age Group	Percentage
18-24	10%
25-34	20%
35-44	30%
45-54	25%
55-64	15%
65-74	10%
75-84	5%
85+	5%



STANDARDS - Elementary Schools

ROOM SIZES	Min	High				
Kindergarten Room	1,200	1,500	15 - 25	students	plus-	toilets
Classrooms	900	950	15 - 25	students		
Early Childhood	1,000	1,400	15 - 25	children	incl.-	toilet / coats
Special Education						
Small Group	450		5 - 8	students		
Classroom	800					
Lab	1,200					
Art (multi purpose CR / Lab)	1,000	1,500				
Music (General)	1,000	1,500				
Physical Education (PE)	3,000	4,000				
Multipurpose room	1,700					
Adaptive PE	500					
PE storage	300					
Learning Resource Center						
Reading (w/ comp. resource)	2,800	3,650	350 - 600	students		
Support	600					
Computer Lab	1,000	1,200	20 - 30	students		
Food Service						
Dining	2,000	3,400	350 - 600	students	3 periods	
Kitchen	500	1,000			serving -	minor prep
Support	1,300	2,200				
Student Services (Admin / Staff)	2,700	3,100	350 - 600	students		
Resource / Support						
Small Group	150	200	5 - 10	students		
Large Group	600	1,500	60 - 125	students		
SITE SIZES	Min	High				
Site (acres) 5 +1/100 students	9	11	350 - 600	students		

Site (acres) 10-15 +1/100 students 14 21 350 - 600 students
 (plus ROW, wetlands, retention, on site water or septic systems)

EXPECTATIONS - All Schools

Safety:

Clear separation of bus / staff / visitor / walker site circulation
Site lighting

Security:

Active / passive systems
Controlled access entry / community use zone (s)

Accessibility:

ADA access to all teaching stations, community, staff areas
Appropriate special services rooms

Building:

Natural light to Classrooms
Appropriate type / size of teaching stations (Flexibility)
Core capacity to match building capacity

Ventilation:

Code required (+/- 12-15) CFM per person

Electrical:

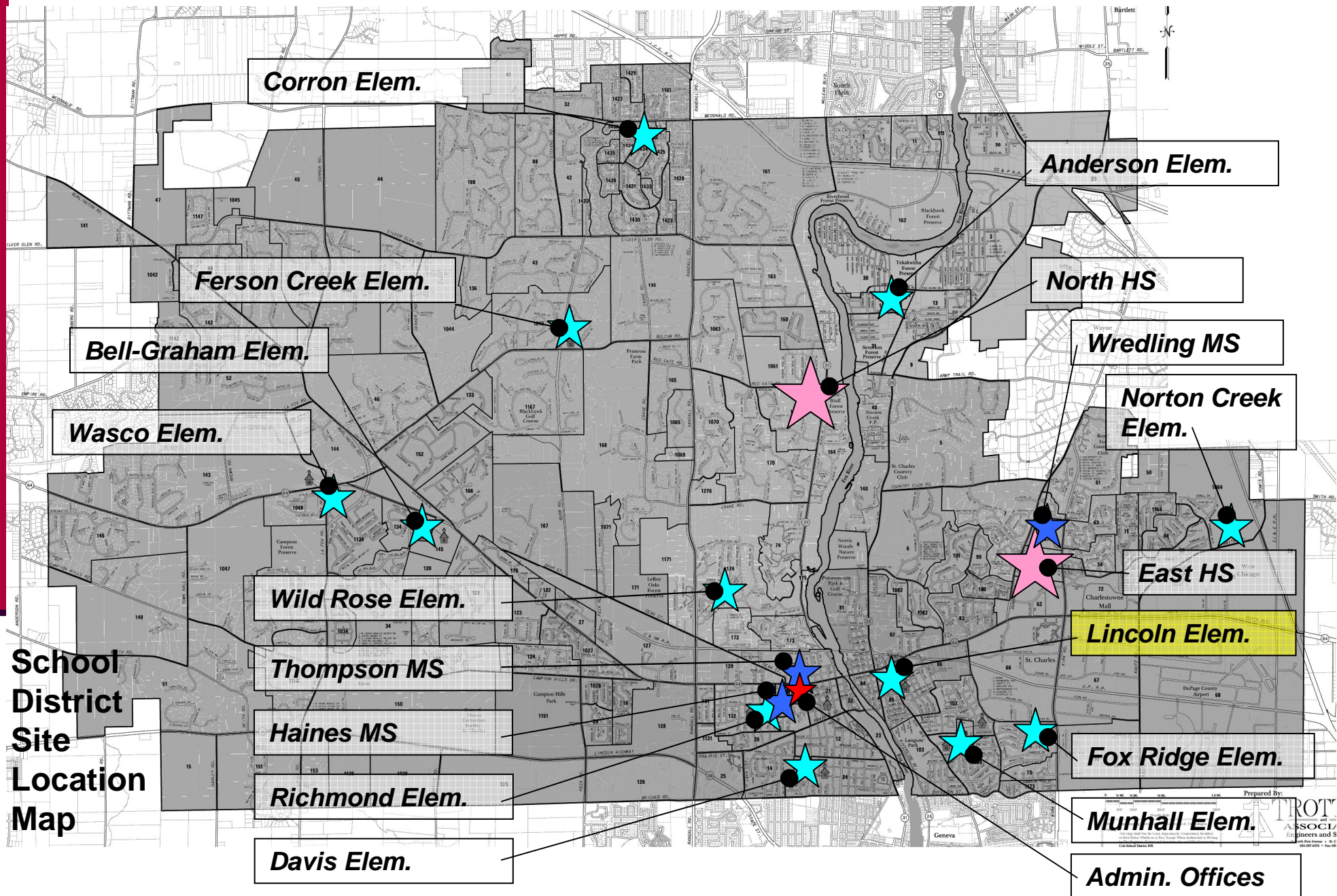
Properly sized electrical to support needs of site and building

Technology:

Appropriate Voice / Video / Data systems

Agenda...

- Introduction
- Approach to Evaluation
- **Building utilization review**
- Small group activity
- Reporting / Prioritization



Lincoln Elementary School

ATS&R



Site Plan

Feb 15 2008

Lincoln Elementary School

SITE:

1.8 Acres

SCP guidelines:
5-11 acres

BUILDING:

36,954 sf

293 Students

126 sf / student

MDE guidelines:
110-135 sf / student

Built – 1928

Add'n – 1961

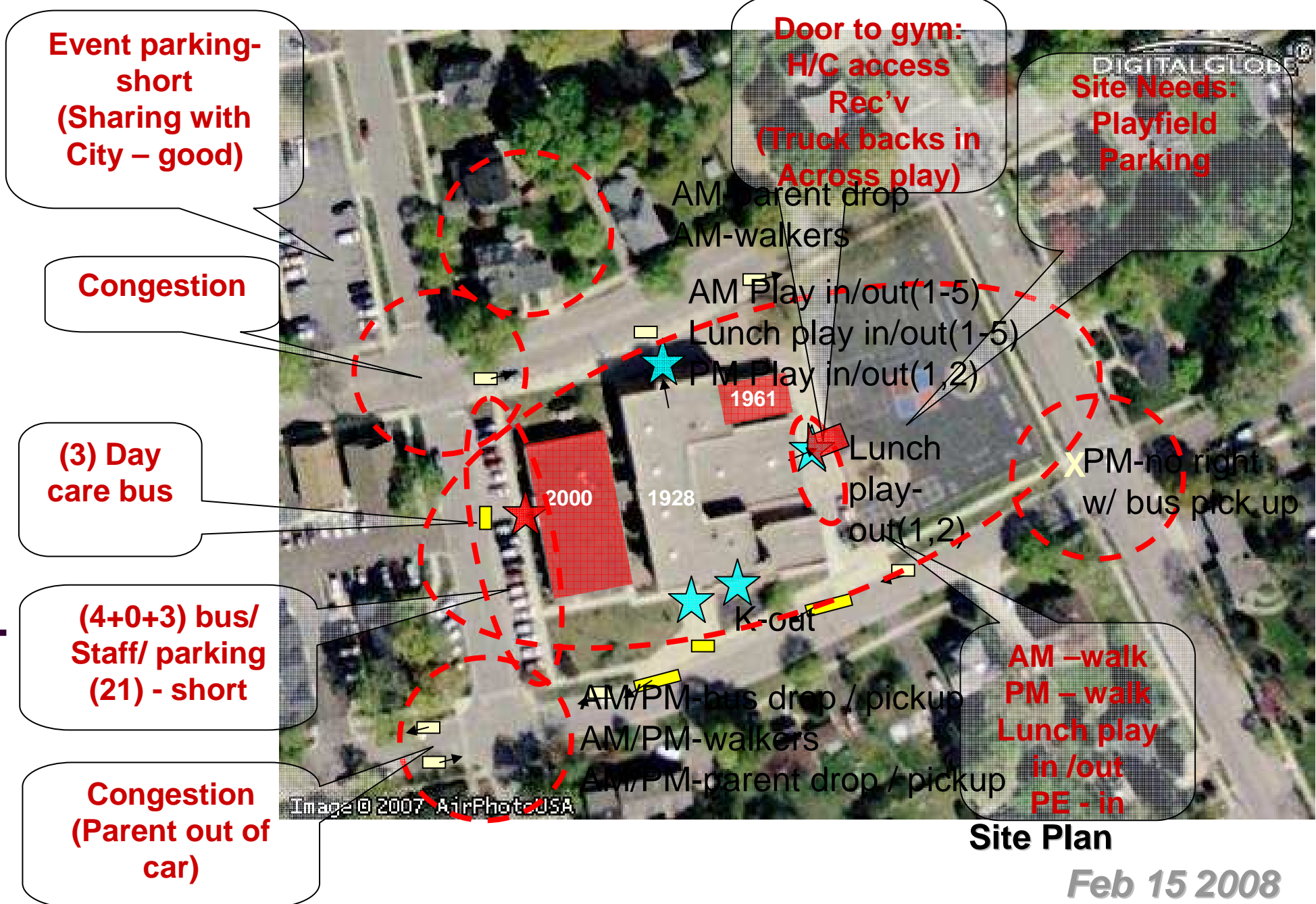
2000



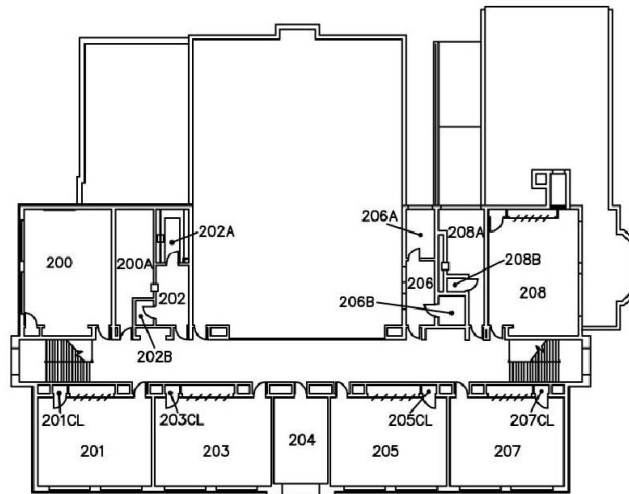
Site Plan

Feb 15 2008

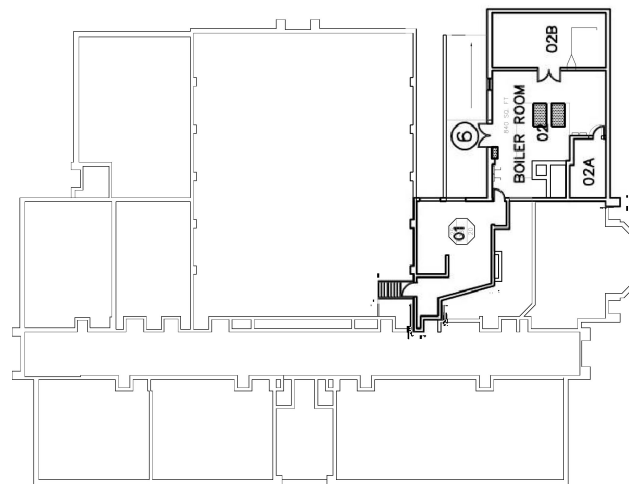
Lincoln Elementary School



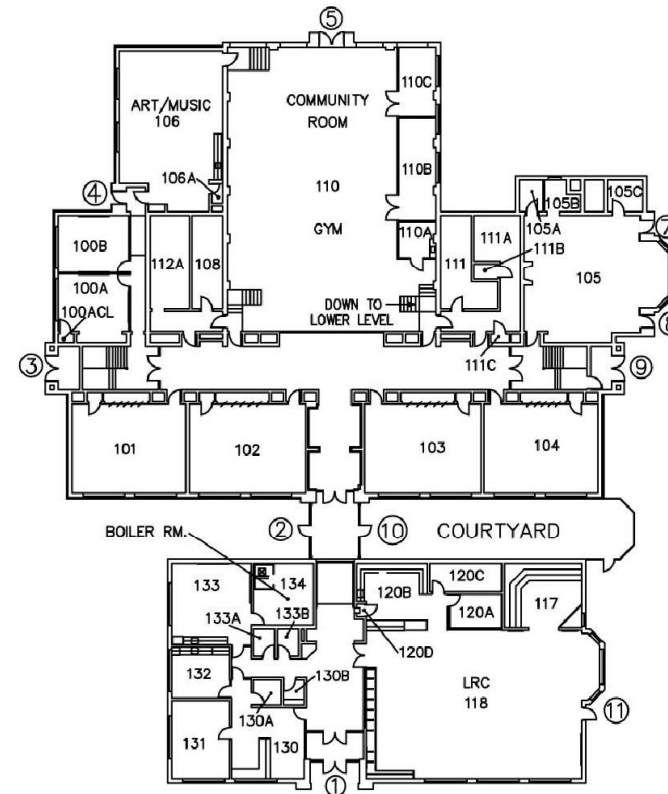
Lincoln Elementary School



Upper Floor



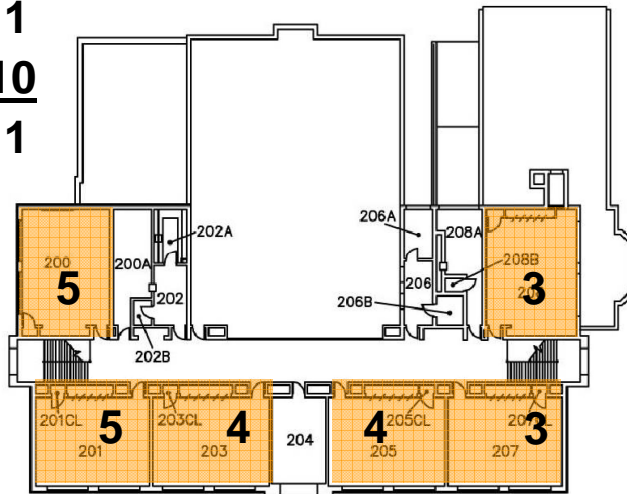
Lower Floor





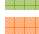












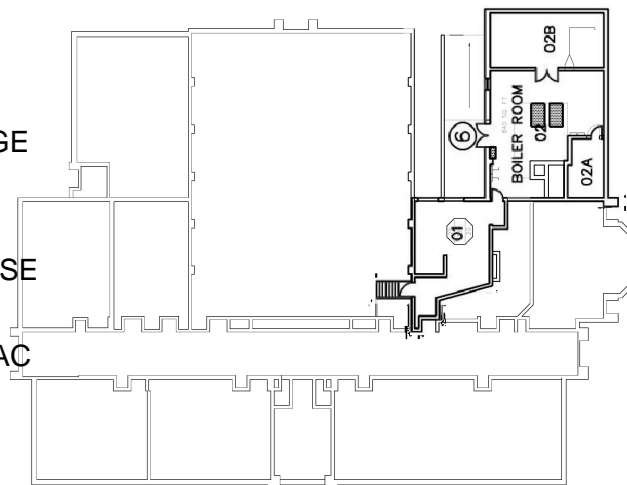
Main Floor

ATS&R

K	1
Grades 1-5	10
<hr/>	
	11



-  KINDERGARTEN
-  CLASSROOM
-  SPECIAL SERVICES
-  SCIENCE
-  ART
-  MUSIC
-  AUDITORIUM / STAGE
-  P.E.
-  LRC / COMP LAB
-  ADMIN./ GUID./ NURSE
-  FOOD SERVICE
-  CENTER BASED / SAC
-  MECH / ELEC
-  DISTRICT
-  LARGE GROUP

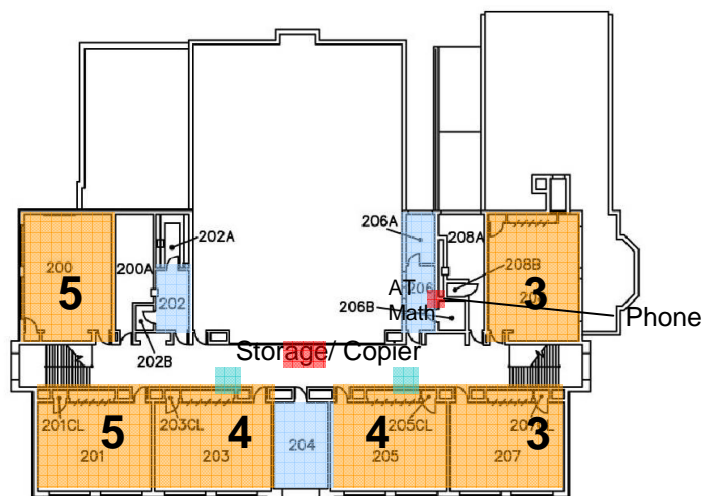


Lower Floor

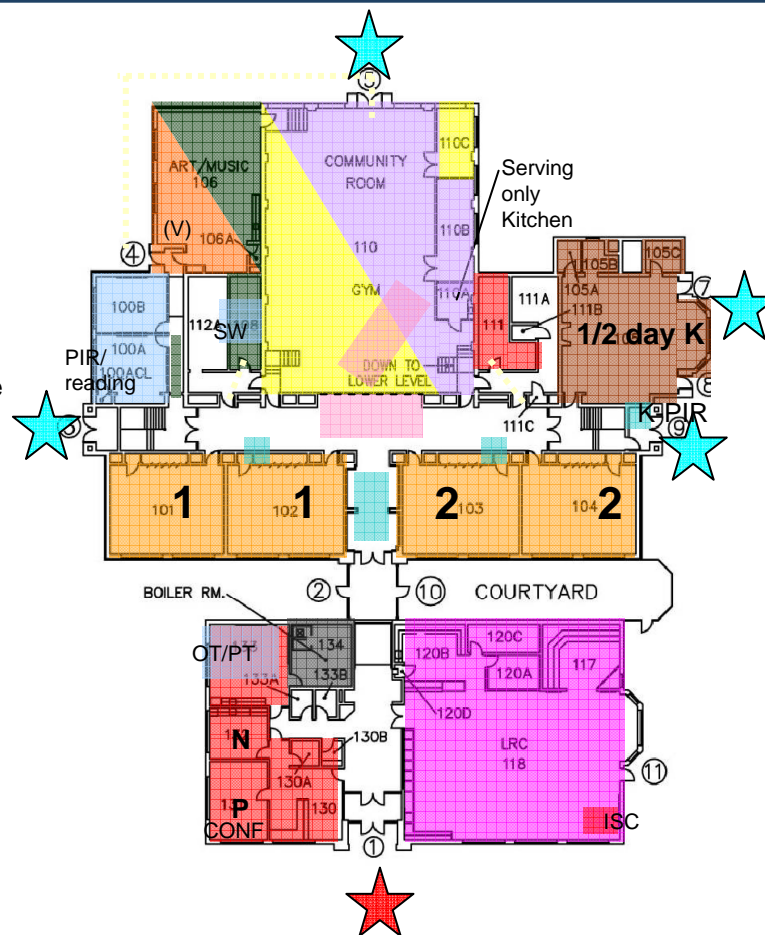


Main Floor

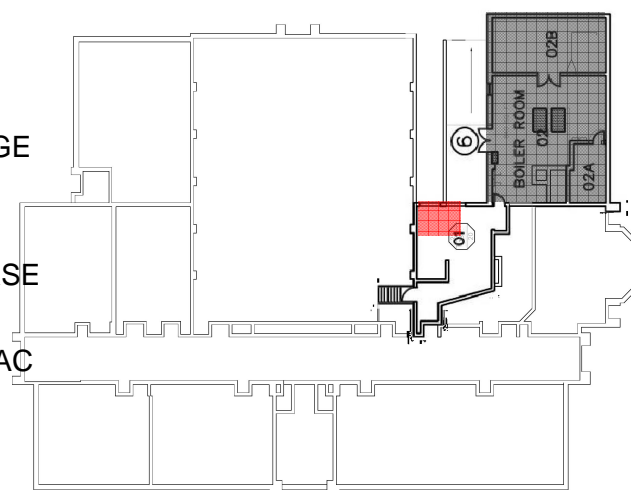
Lincoln Elementary School



Upper Floor



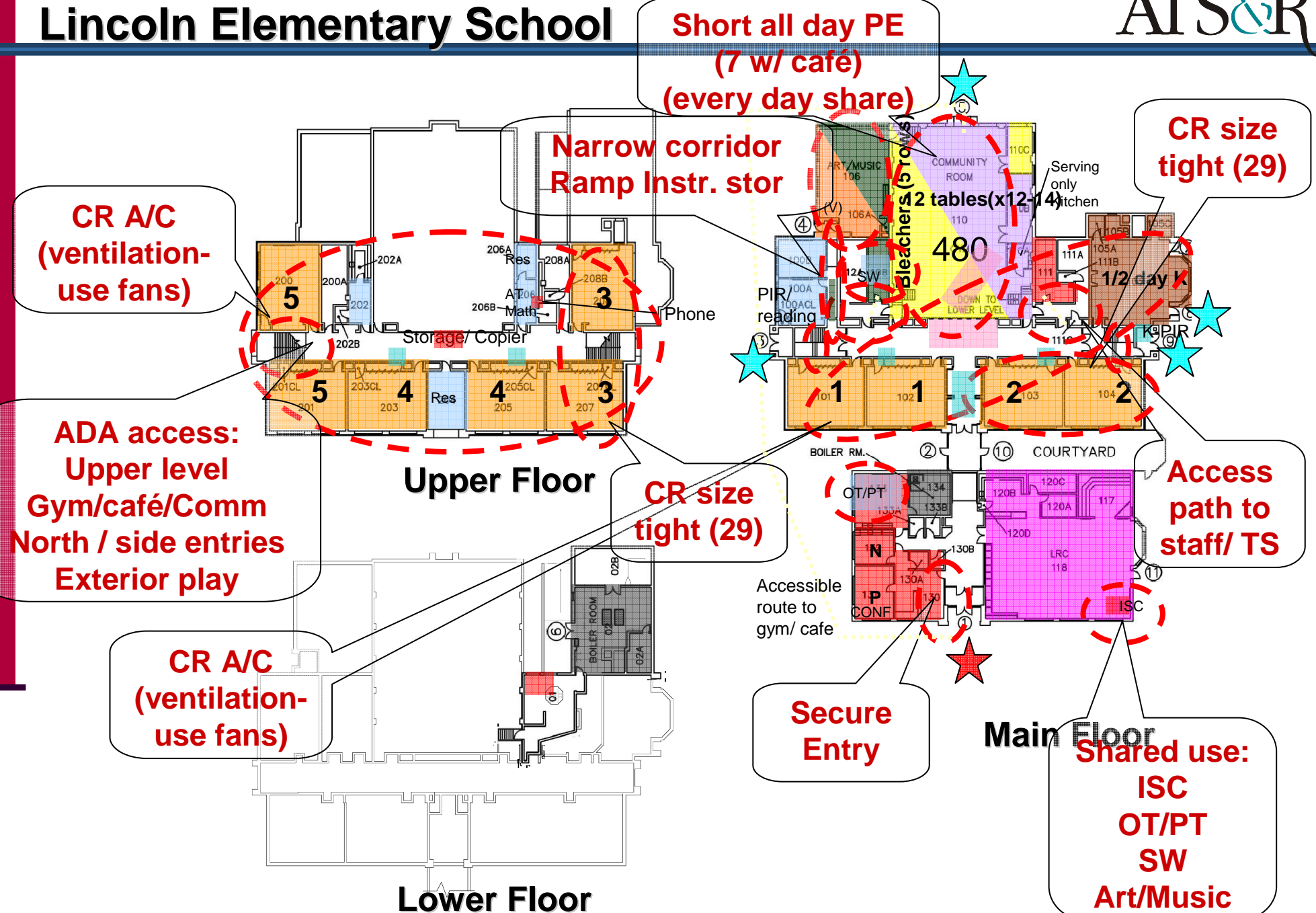
Main Floor



Lower Floor

- KINDERGARTEN
- CLASSROOM
- SPECIAL SERVICES
- SCIENCE
- ART
- MUSIC
- AUDITORIUM / STAGE
- P.E.
- LRC / COMP LAB
- ADMIN./ GUID./ NURSE
- FOOD SERVICE
- CENTER BASED / SAC
- MECH / ELEC
- DISTRICT
- LARGE GROUP

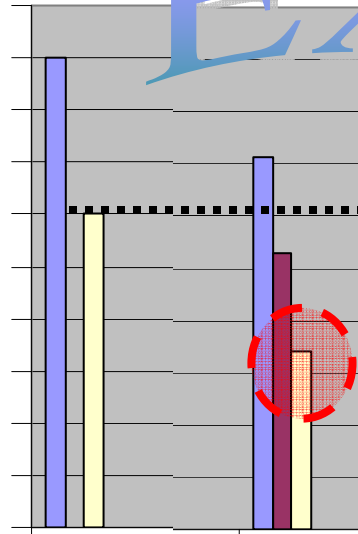
Lincoln Elementary School



KINDERGARTEN ROOMS

Square Footage

1,600
1,500
1,400
1,300
1,200
1,100
1,000
900
800
700
600



MDE

Davis (K-5)

Example

HIGH
TYPICAL
LOW

1,509
1,509
1,509

1,314
1,127
940

1,392
1,392
1,392

1,200 sf or large
Less than 1,200 s

2

1,509

1

1,314

2

1,392

1

940

TOTAL

2

3,018

2

2,254

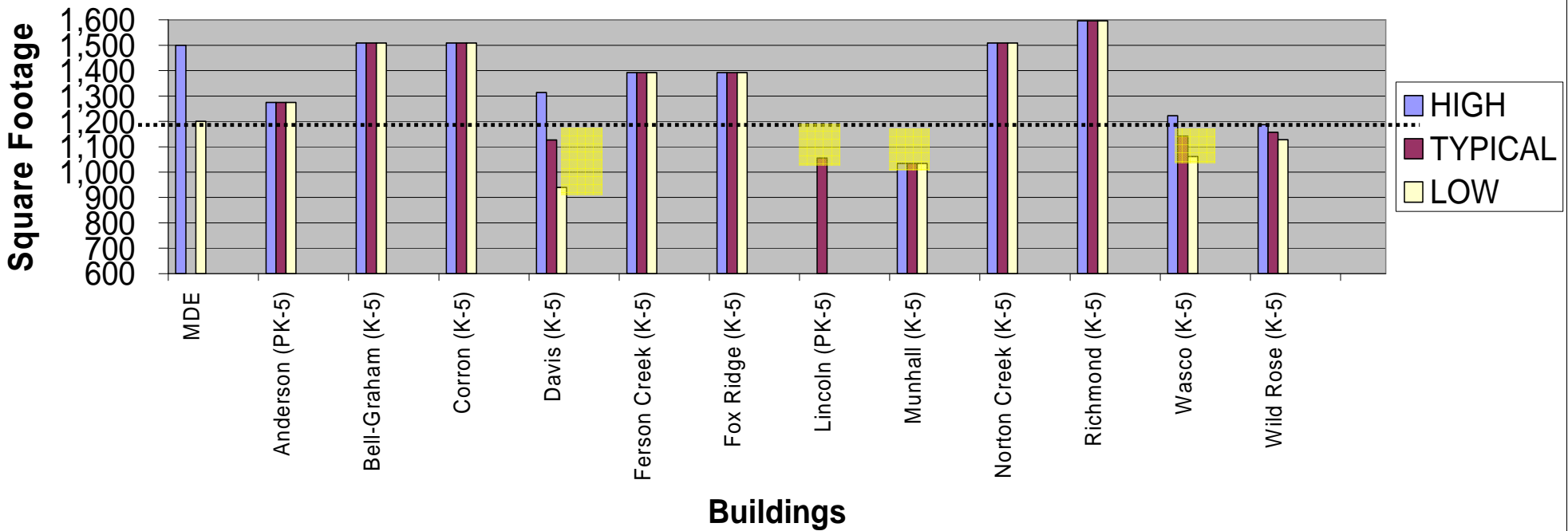
2

2,784

KINDERGARTEN ROOMS– ELEMENTARY SCHOOLS

	MDE	Anderson (PK-5)	Bell-Graham (K-5)	Corron (K-5)	Davis (K-5)	Ferson Creek (K-5)	Fox Ridge (K-5)	Lincoln (PK-5)	Munhall (K-5)	Norton Creek (K-5)	Richmond (K-5)	Wasco (K-5)	Wild Rose (K-5)	
HIGH	1,500	1,274	1,509	1,509	1,314	1,392	1,392		1,035	1,509	1,596	1,223	1,187	-
TYPICAL		1,274	1,509	1,509	1,127	1,392	1,392	1,055	1,035	1,509	1,596	1,142	1,158	#DIV/0!
LOW	1,200	1,274	1,509	1,509	940	1,392	1,392		1,035	1,509	1,596	1,061	1,128	-
	2	2	2	2	1	2	2			2	2	1		16.0
1,200 sf or larger					1			1	2			1	1	
Less than 1,200 sf					940			1,055	1,035			1,061	1,187	7.0
													1,128	
TOTAL	2	2	2	2	2	2	2	1	2	2	2	2	2	totals 23.0
	2,548	3,018	3,018	2,254	2,784	2,784	1,055	2,070	3,018	3,192	2,284	2,315	0	

KINDERGARTEN ROOMS



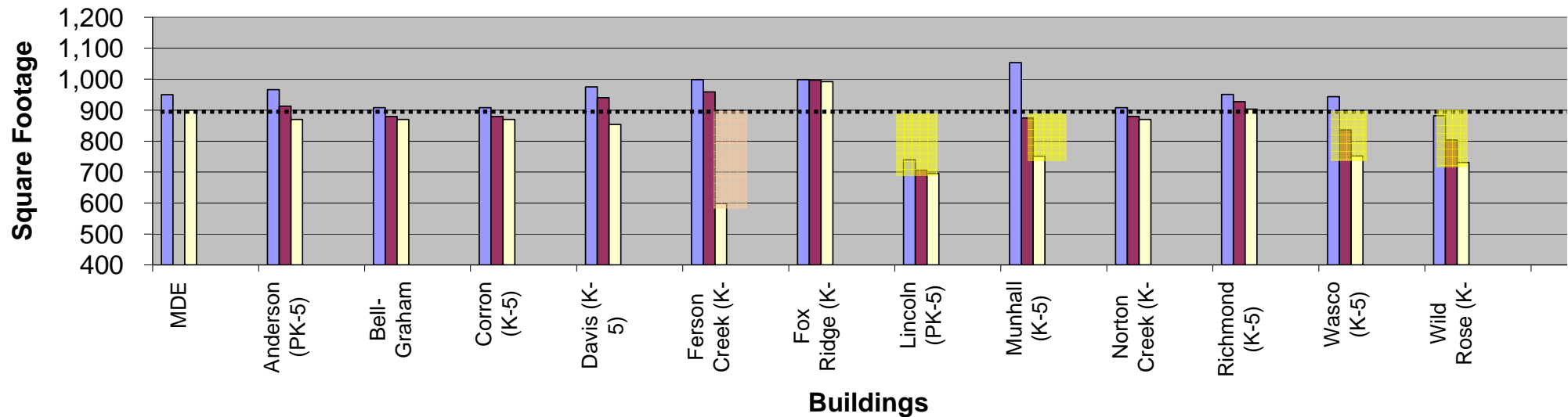
CLASSROOMS— ELEMENTARY SCHOOLS

MDE	Anderson (PK-5)	Bell-Graham (K-5)	Corron (K-5)	Davis (K-5)	Ferson Creek (K-5)	Fox Ridge (K-5)	Lincoln (PK-5)	Munhall (K-5)	Norton Creek (K-5)	Richmond (K-5)	Wasco (K-5)	Wild Rose (K-5)	
950	966	908	908	975	998	998	740	1,053	908	951	944	882	-
	913	880	880	940	959	997	706	875	880	927	836	803	#DIV/0!
900	870	870	870	854	598	992	695	751	870	903	752	731	-

1966												11,053												
2944						13998		13998				2975				3951		4944						
5940						5994		4994				3940				6940		2933						
3914	5908	5908	10975	4940	1992			1992				2936		5908	6903		1900							
6870	15870	14870	2894	2598					1740		2825	14870			4830		2882							
						3854				1721		3801			1758		8873							
										4705		4751			7752		3742							
										4695								7738						
																		1731						

--	--	--	--	--	--	--	--	--	--	--	--	--	--	--	--	--	--	--	--	--	--	--	--	--	--	--	--	--	--	--	--	--	--	--	--	--	--	--	--	--	--	--	--	--	--	--	--	--	--	--	--	--	--	--	--	--	--	--	--	--	--	--	--	--	--	--	--	--	--	--	--	--	--	--	--	--	--	--	--	--	--	--	--	--	--	--	--	--	--	--	--	--	--	--	--	--	--	--	--	--	--	--	--	--	--	--	--	--	--	--	--	--	--	--	--	--	--	--	--	--	--	--	--	--	--	--	--	--	--	--	--	--	--	--	--	--	--	--	--	--	--	--	--	--	--	--	--	--	--	--	--	--	--	--	--	--	--	--	--	--	--	--	--	--	--	--	--	--	--	--	--	--	--	--	--	--	--	--	--	--	--	--	--	--	--	--	--	--	--	--	--	--	--	--	--	--	--	--	--	--	--	--	--	--	--	--	--	--	--	--	--	--	--	--	--	--	--	--	--	--	--	--	--	--	--	--	--	--	--	--	--	--	--	--	--	--	--	--	--	--	--	--	--	--	--	--	--	--	--	--	--	--	--	--	--	--	--	--	--	--	--	--	--	--	--	--	--	--	--	--	--	--	--	--	--	--	--	--	--	--	--	--	--	--	--	--	--	--	--	--	--	--	--	--	--	--	--	--	--	--	--	--	--	--	--	--	--	--	--	--	--	--	--	--	--	--	--	--	--	--	--	--	--	--	--	--	--	--	--	--	--	--	--	--	--	--	--	--	--	--	--	--	--	--	--	--	--	--	--	--	--	--	--	--	--	--	--	--	--	--	--	--	--	--	--	--	--	--	--	--	--	--	--	--	--	--	--	--	--	--	--	--	--	--	--	--	--	--	--	--	--	--	--	--	--	--	--	--	--	--	--	--	--	--	--	--	--	--	--	--	--	--	--	--	--	--	--	--	--	--	--	--	--	--	--	--	--	--	--	--	--	--	--	--	--	--	--	--	--	--	--	--	--	--	--	--	--	--	--	--	--	--	--	--	--	--	--	--	--	--	--	--	--	--	--	--	--	--	--	--	--	--	--	--	--	--	--	--	--	--	--	--	--	--	--	--	--	--	--	--	--	--	--	--	--	--	--	--	--	--	--	--	--	--	--	--	--	--	--	--	--	--	--	--	--	--	--	--	--	--	--	--	--	--	--	--	--	--	--	--	--	--	--	--	--	--	--	--	--	--	--	--	--	--	--	--	--	--	--	--	--	--	--	--	--	--	--	--	--	--	--	--	--	--	--	--	--	--	--	--	--	--	--	--	--	--	--	--	--	--	--	--	--	--	--	--	--	--	--	--	--	--	--	--	--	--	--	--	--	--	--	--	--	--	--	--	--	--	--	--	--	--	--	--	--	--	--	--	--	--	--	--	--	--	--	--	--	--	--	--	--	--	--	--	--	--	--	--	--	--	--	--	--	--	--	--	--	--	--	--	--	--	--	--	--	--	--	--	--	--	--	--	--	--	--	--	--	--	--	--	--	--	--	--	--	--	--	--	--	--	--	--	--	--	--	--	--	--	--	--	--	--	--	--	--	--	--	--	--	--	--	--	--	--	--	--	--	--	--	--	--	--	--	--	--	--	--	--	--	--	--	--	--	--	--	--	--	--	--	--	--	--	--	--	--	--	--	--	--	--	--	--	--	--	--	--	--	--	--	--	--	--	--	--	--	--	--	--	--	--	--	--	--	--	--	--	--	--	--	--	--	--	--	--	--	--	--	--	--	--	--	--	--	--	--	--	--	--	--	--	--	--	--	--	--	--	--	--	--	--	--	--	--	--	--	--	--	--	--	--	--	--	--	--	--	--	--	--	--	--	--	--	--	--	--	--	--	--	--	--	--	--	--	--	--	--	--	--	--	--	--	--	--	--	--	--	--	--	--	--	--	--	--	--	--	--	--	--	--	--	--	--	--	--	--	--	--	--	--	--	--	--	--	--	--	--	--	--	--	--	--	--	--	--	--	--	--	--	--	--	--	--	--	--	--	--	--	--	--	--	--	--	--	--	--	--	--	--	--	--	--	--	--	--	--	--	--	--	--	--	--	--	--	--	--	--	--	--	--	--	--	--	--	--	--	--	--	--	--	--	--	--	--	--	--	--	--	--	--	--	--	--	--	--	--	--	--	--	--	--	--	--	--	--	--	--	--	--	--	--	--	--	--	--	--	--	--	--	--	--	--	--	--	--	--	--	--	--	--	--	--	--	--	--	--	--	--	--	--	--	--	--	--	--	--	--	--	--	--	--	--	--	--	--	--	--	--	--	--	--	--	--	--	--	--	--	--	--	--	--	--	--	--	--	--	--	--	--	--	--	--	--	--	--	--	--	--	--	--	--	--	--	--	--	--	--	--	--	--	--	--	--	--	--	--	--	--	--	--	--	--	--	--	--	--	--	--	--	--	--	--	--	--	--	--	--	--	--	--	--	--	--	--	--	--	--	--	--	--	--	--	--	--	--	--	--	--	--	--	--	--	--	--	--	--	--	--	--	--	--	--	--	--	--	--	--	--	--	--	--	--	--	--	--	--	--	--	--	--	--	--	--	--	--	--	--	--	--	--	--	--	--	--	--	--	--	--	--	--	--	--	--	--	--	--	--	--	--	--	--	--	--	--	--	--	--	--	--	--	--	--	--	--	--	--	--	--	--	--	--	--	--	--	--	--	--	--	--	--	--	--	--	--	--	--	--	--	--	--	--	--	--	--	--	--	--	--	--	--	--	--	--	--	--	--	--	--	--	--	--	--	--	--	--	--	--	--	--	--	--	--	--	--	--	--	--	--	--	--	--	--	--	--	--	--	--	--	--	--	--	--	--	--	--	--	--	--	--	--	--	--	--	--	--	--	--	--	--	--	--	--	--	--	--	--	--	--	--	--	--	--	--	--	--	--	--	--	--	--	--	--	--	--	--	--	--	--	--	--	--	--	--	--	--	--	--	--	--	--	--	--	--	--	--	--	--	--	--	--	--	--	--	--	--	--	--	--	--	--	--	--	--	--	--	--	--	--	--	--	--	--	--	--	--	--	--	--	--	--	--	--	--	--	--	--	--	--	--	--	--	--	--	--	--	--	--	--	--	--	--	--	--	--	--	--	--	--	--	--	--	--	--	--	--	--	--	--	--	--	--	--	--	--	--	--	--	--	--	--	--	--	--	--	--	--	--	--	--	--	--	--	--	--	--	--	--	--	--	--	--	--	--	--	--	--	--	--	--	--	--	--	--	--	--	--	--	--	--	--	--	--	--	--	--	--	--	--	--	--	--	--	--	--	--	--	--	--	--	--	--	--	--	--	--

CLASSROOMS

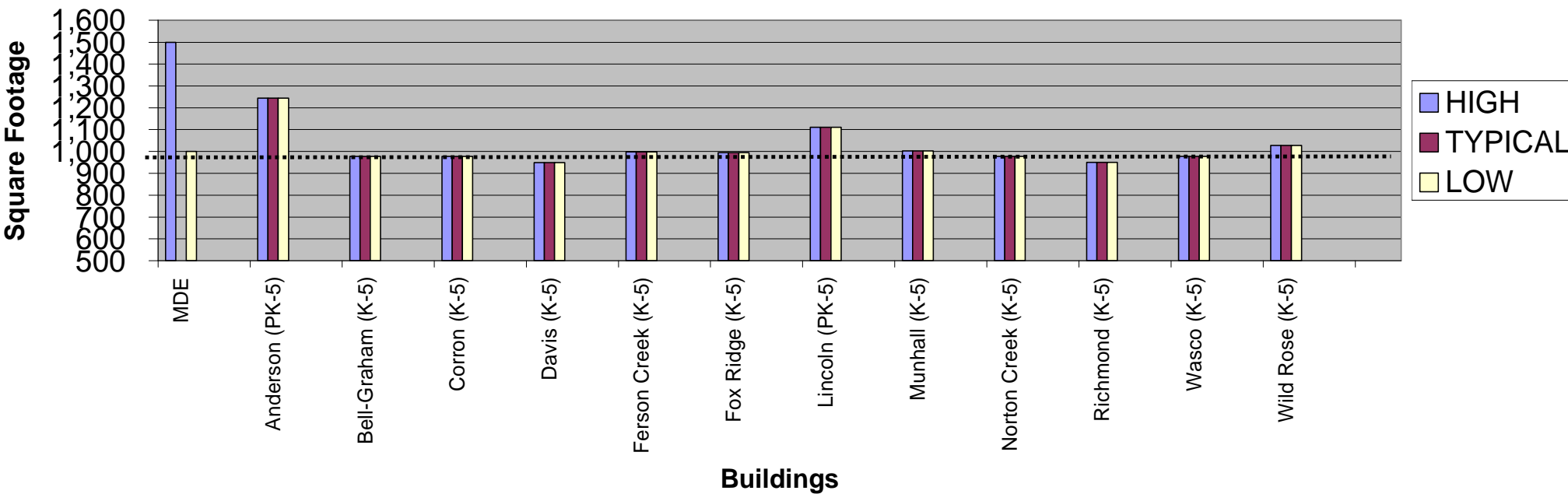


NOTES: . Willow Creek Art room used as a classroom (11/17/18)

ART ROOMS – ELEMENTARY SCHOOLS

		Anderson (PK-5)		Bell-Graham (K-5)		Corron (K-5)		Davis (K-5)		Ferson Creek (K-5)		Fox Ridge (K-5)		Lincoln (PK-5)		Munhall (K-5)		Norton Creek (K-5)		Richmond (K-5)		Wasco (K-5)		Wild Rose (K-5)			
MDE																											
1,500		1,244		978		978		949		998		994		1,111		1,003		978		951		978		1,028		-	
		1,244		978		978		949		998		994		1,111		1,003		978		951		978		1,028		#DIV/0!	
1,000		1,244		978		978		949		998		994		1,111		1,003		978		951		978		1,028		-	
		1	1,244										0.5	1,111	1	1,003							1	1,028			
1,000 sf or larger																											
Less than 1,000 sf				1	978	1	978	1	949	1	998	1	994				1	978	1	951	1	978					
TOTAL		1	1,244	1	978	1	978	1	949	1	998	1	994	1	556	1	1,003	1	978	1	951	1	978	1	1,028	0	-

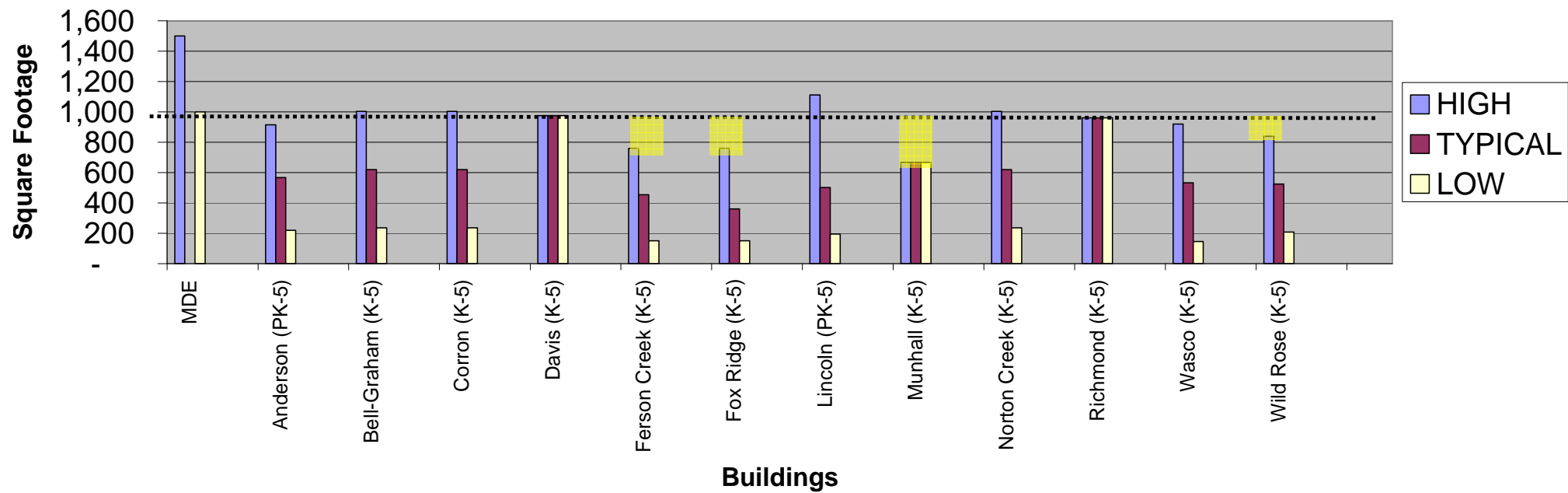
ART / PROJECT



MUSIC ROOMS – ELEMENTARY SCHOOLS

MDE	Anderson (PK-5)	Bell-Graham (K-5)	Corron (K-5)	Davis (K-5)	Ferson Creek (K-5)	Fox Ridge (K-5)	Lincoln (PK-5)	Munhall (K-5)	Norton Creek (K-5)	Richmond (K-5)	Wasco (K-5)	Wild Rose (K-5)	
1,500	914	1,003	1,003	975	759	759	1,111	667	1,003	960	919	840	-
	567	620	620	975	455	361	500	667	620	960	532	524	#DIV/0!
1,000	219	236	236	975	150	150	195	667	236	960	145	208	-
		1 1,003	1 1,003				0.5 1,111		1 1,003				
1,000 sf or larger					1 759	1 759							
Less than 1,000 sf	1 914	1 236	1 236	1 975	1 150	1 173	1 195	1 667	1 236	1 960	1 145	1 208	
	1 219				1 150								
TOTAL	2 1,133	2 1,239	2 1,239	1 975	2 909	3 1,082	2 751	1 667	2 1,239	1 960	2 1,064	2 1,048	0 -

MUSIC



TES: . Lincoln Art room shared with Music

St Charles District 303

Agenda...

- Introduction
- Approach to Evaluation
- Building utilization review
- **Small group activity**
- Reporting / Prioritization

Main themes from groups at Summit 303 meeting on facilities (Mar 13)

- Safety and Security
- Increase Classrooms / class size - crowding
- Indoor air quality
- ADA / accessibility
- Space for programs / future needs

Your Input...

- List the sources of pride and strengths of **Lincoln Elementary School**.

- List **facility** improvements (needs) that should be made for **Lincoln Elementary School**.

Record:

All of the group's reported areas of strengths and needs.

Group Prioritize:

Identify the five (5) most significant needs.

C.U.S.D 303
St. Charles School District

<u>STRENGTHS</u>	<u>Facility Needs</u>
GOOD NATURAL LIGHT	NO STAFF WORKROOM
AMPLE PARKING	Gym SPACE TOO SMALL
CLASSROOM SIZES	NEED TO SEPARATE BUS TRAFFIC FROM PARENT DROP-OFF
TECHNOLOGY IS UP-TO-DATE	POOR VENTILATION

SAVED

List the sources of pride and strengths of Lincoln Elementary School

- Historical/Architectural integrity
- Small school size / School size – Community/Location, Track record of educational excellence
- Structurally sound
- Urban location and access to community amenities
- Flexibility nooks and crannies
- Staff committed to “Can Do” attitude
- New addition – Good core space
- Good maintenance
- Technology
- Secure access

Identify the top 5 facility improvements/needs that should be made for Lincoln Elementary School

1. ADA Access (10)
2. Parking (9)
3. Classroom security – GYM, Cafeteria, telephone system (9)
4. More space – flexible space (8)
5. Air conditioning (6)

(the number in parenthesis () indicates the number of votes received during the prioritization process)

Other:

- Storage (3)
- Safety / Secure – outdoor lighting (2)
- Traffic Congestion Improvement (1)
- Crossing guard ILL & 6th (1)
- Additional playground (0)

(the number in parenthesis () indicates the number of votes received during the prioritization process)

Thank You...