

ATS&R



Davis Elementary Community Meeting

May 6, 2008

Agenda...

- Introduction
- Approach to Evaluation
- Building utilization review
- Small group activity
- Reporting / Prioritization

ATS&R Background- School Specialists

- 63 Years as school specialists
- 98% of workload is PreK-12 schools
- Staff of 84 with in-house services:
 - Pre-Referendum Planning
 - Facilities Master Planning
 - Architectural
 - Mechanical/ Electrical
 - LEED Certification
 - Technology
 - Site Development
 - Construction Administration
 - Interior Design
 - Specifications/ Quality Control
 - Total Energy Checkpoint
- National Exposure
 - School Experience Nationally and Internationally
 - CEFPI-AASA-ASBO-NSBA-ITTE-CSI-NASSP
 - Recognized Presenters/Authors



District 303 Vision Statement

C.U.S.D 303
St. Charles School District

“The District 303 School Community empowers and inspires ALL to

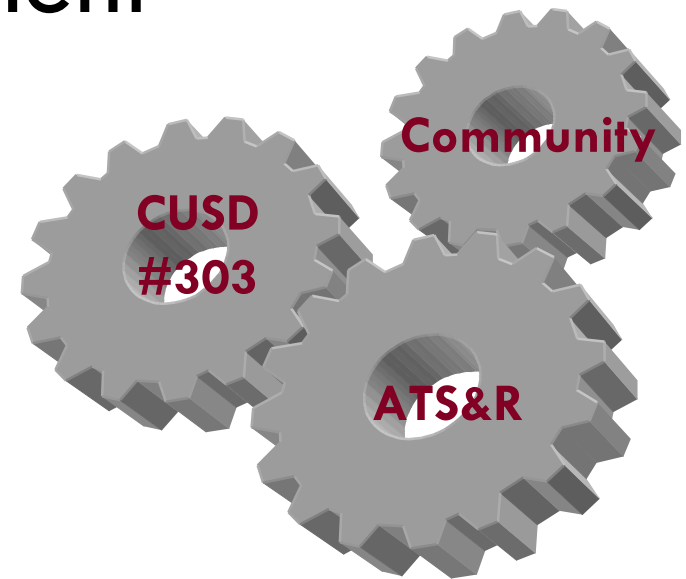
- Attain excellence
- Learn with passion, and
- Live with integrity in a changing world.”

Agenda...

- Introduction
- **Approach to Evaluation**
- Building utilization review
- Small group activity
- Reporting / Prioritization

Approach to Evaluation

- Comprehensive assessment of all schools
- Community group involvement
- Developing a Master Facilities Plan



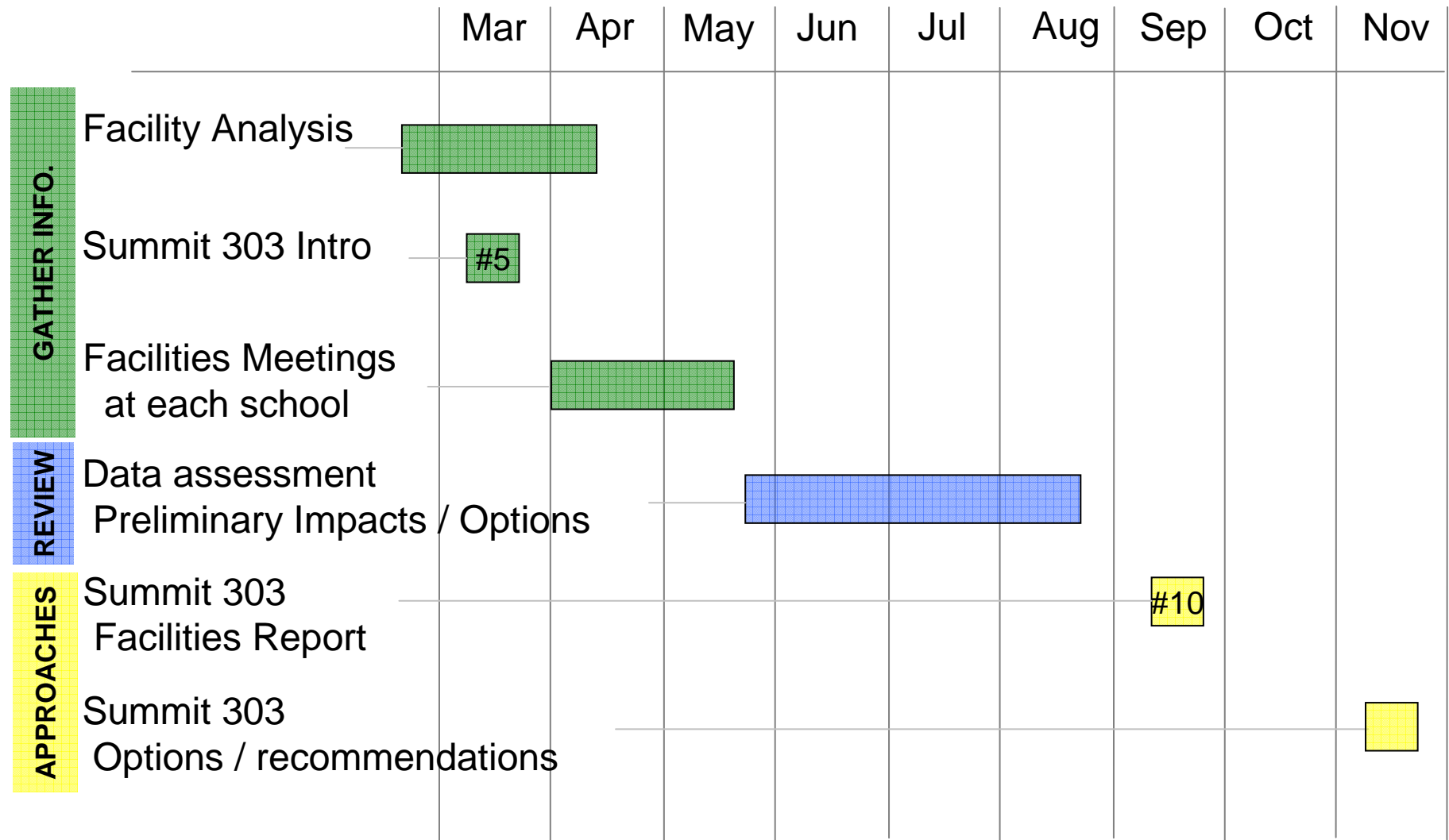
Develop a Master Facilities Plan

Providing a solid foundation for the Master Plan

- Supported by the assessment and community engagement process
- Responds to research on demographics, space, etc.
- Open, honest communication with the community
- Guide for planning and improvement projects for the next 20 years



Age Group	Percentage
18-24	10%
25-34	20%
35-44	30%
45-54	25%
55-64	15%
65-74	10%
75-84	5%
85+	5%



STANDARDS - Elementary Schools

ROOM SIZES	Min	High				
Kindergarten Room	1,200	1,500	15	-	25	students plus- toilets
Classrooms	900	950	15	-	25	students
Early Childhood	1,000	1,400	15	-	25	children incl.- toilet / coats
Special Education						
Small Group	450		5	-	8	students
Classroom	800					
Lab	1,200					
Art (multi purpose CR / Lab)	1,000	1,500				
Music (General)	1,000	1,500				
Physical Education (PE)	3,000	4,000				
Multipurpose room	1,700					
Adaptive PE	500					
PE storage	300					
Learning Resource Center						
Reading (w/ comp. resource)	2,800	3,650	350	-	600	students
Support	600					
Computer Lab	1,000	1,200	20	-	30	students
Food Service						
Dining	2,000	3,400	350	-	600	students 3 periods
Kitchen	500	1,000				serving - minor prep
Support	1,300	2,200				
Student Services (Admin / Staff)	2,700	3,100	350	-	600	students
Resource / Support						
Small Group	150	200	5	-	10	students
Large Group	600	1,500	60	-	125	students

SITE SIZES	Min	High			
Site (acres) 5 +1/100 students	9	11	350	-	600 students
Site (acres) 10-15 +1/100 students (plus ROW, wetlands, retention, on site water or septic systems)	14	21	350	-	600 students

EXPECTATIONS - All Schools

Safety:

Clear separation of bus / staff / visitor / walker site circulation
Site lighting

Security:

Active / passive systems
Controlled access entry / community use zone (s)

Accessibility:

ADA access to all teaching stations, community, staff areas
Appropriate special services rooms

Building:

Natural light to Classrooms
Appropriate type / size of teaching stations (Flexibility)
Core capacity to match building capacity

Ventilation:

Code required (+/- 12-15) CFM per person

Electrical:

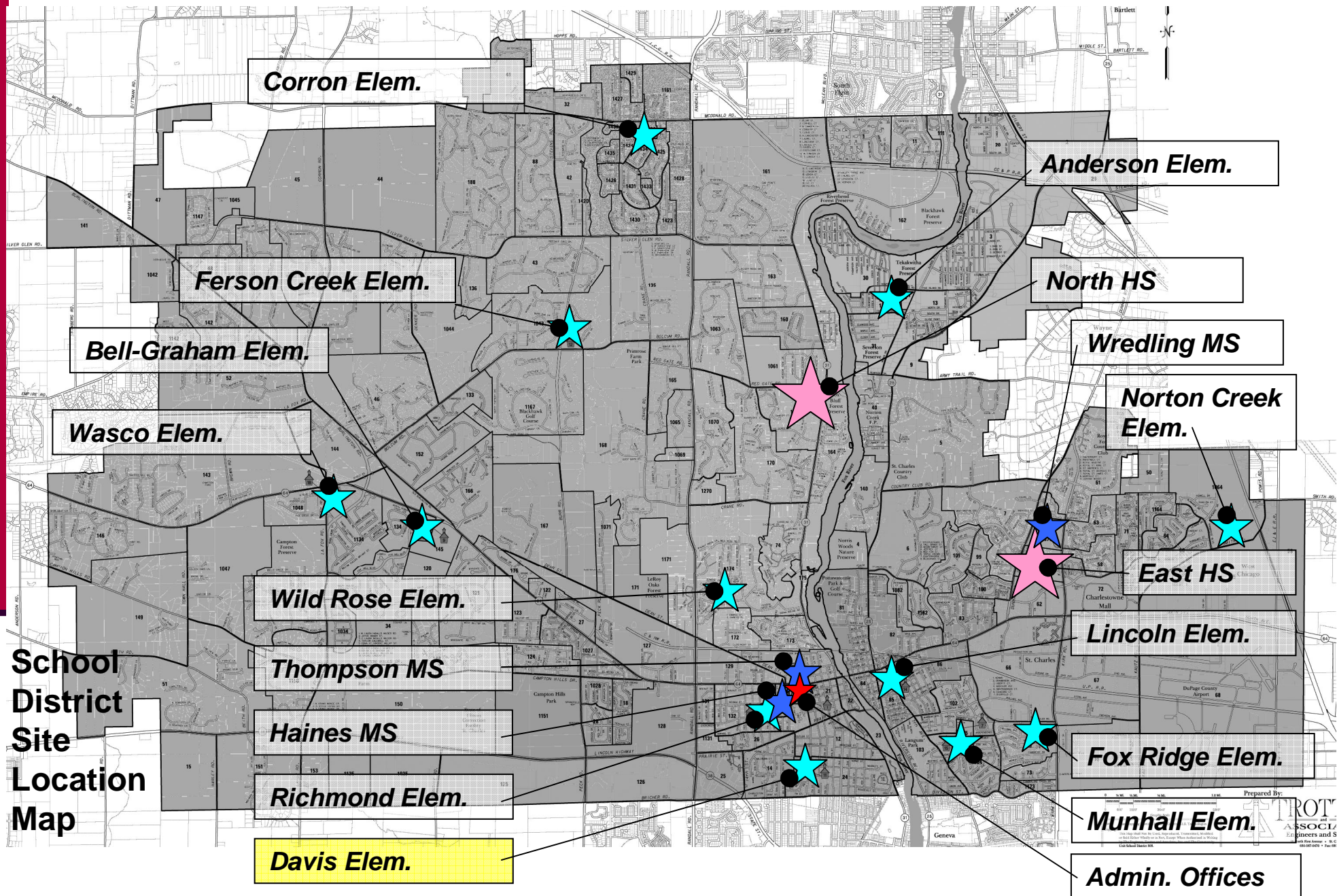
Properly sized electrical to support needs of site and building

Technology:

Appropriate Voice / Video / Data systems

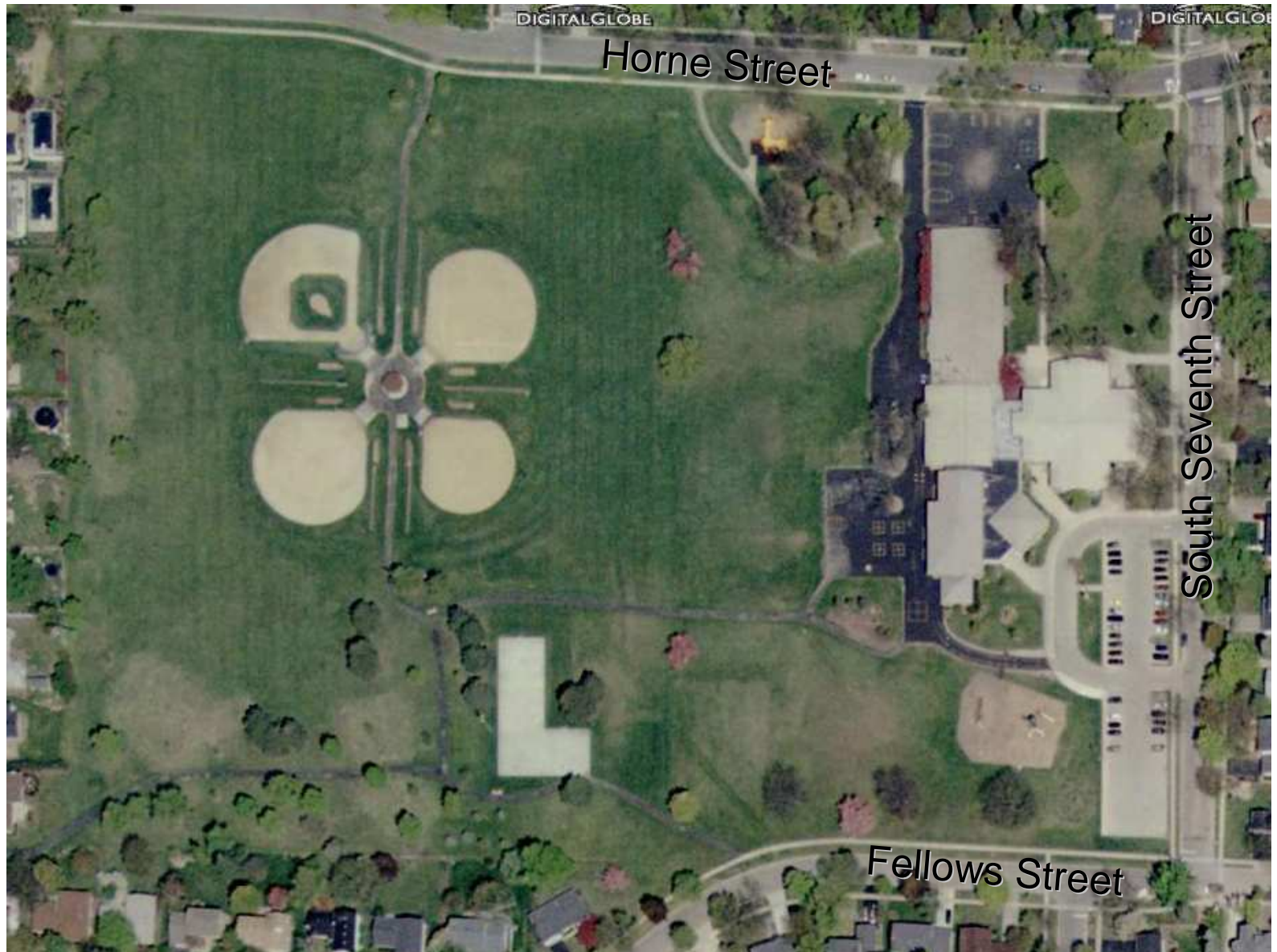
Agenda...

- Introduction
- Approach to Evaluation
- **Building utilization review**
- Small group activity
- Reporting / Prioritization



Davis Elementary School

ATS&R



Site Plan

Feb 15 2008

Davis Elementary School

SITE:

15.7 Acres

SCP guidelines:
5-11 acres

BUILDING:

59,099 sf

544 Students

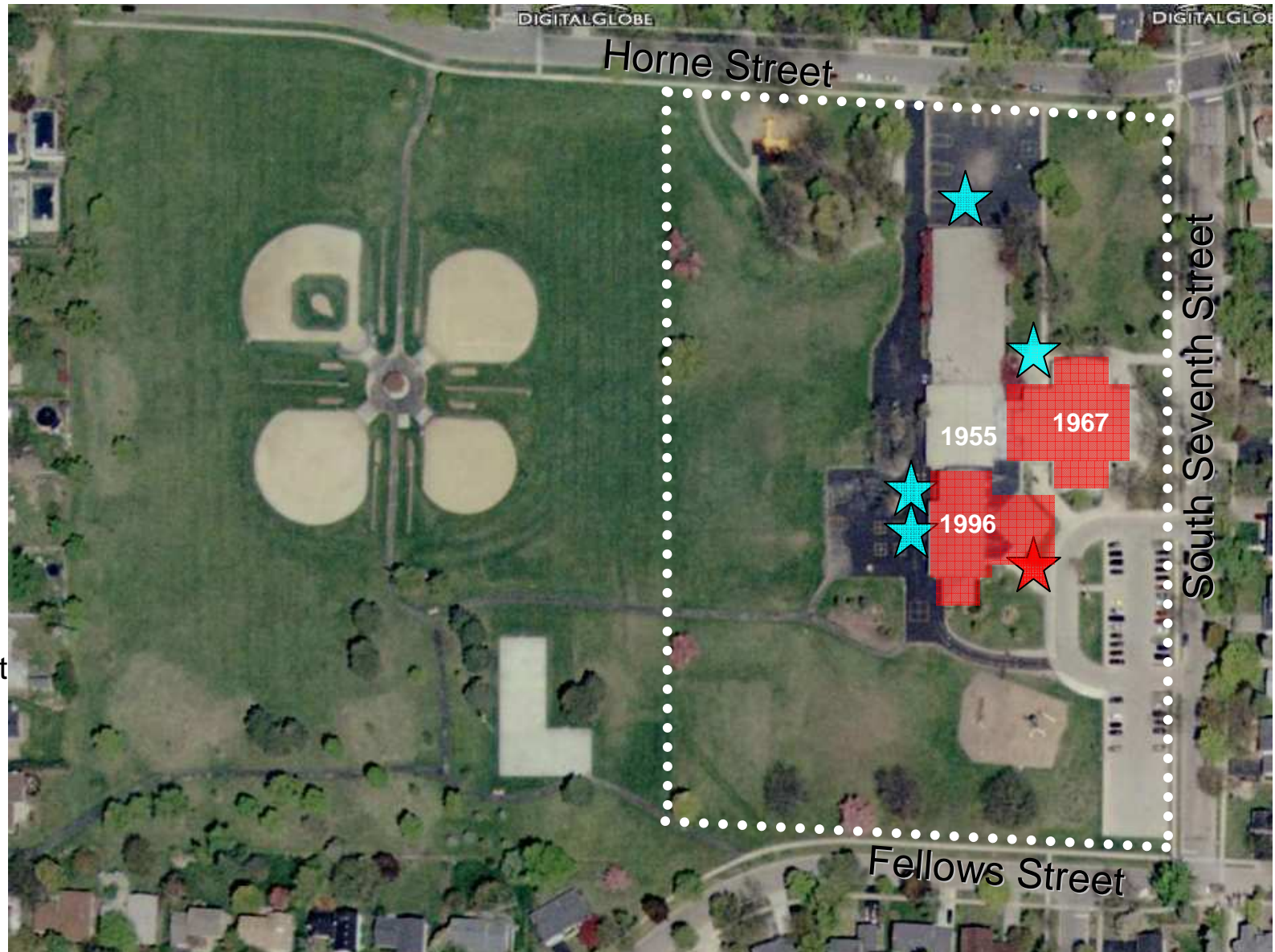
109 sf / student

MDE guidelines:
110-135 sf / student

Built – 1955

Add'n – 1967

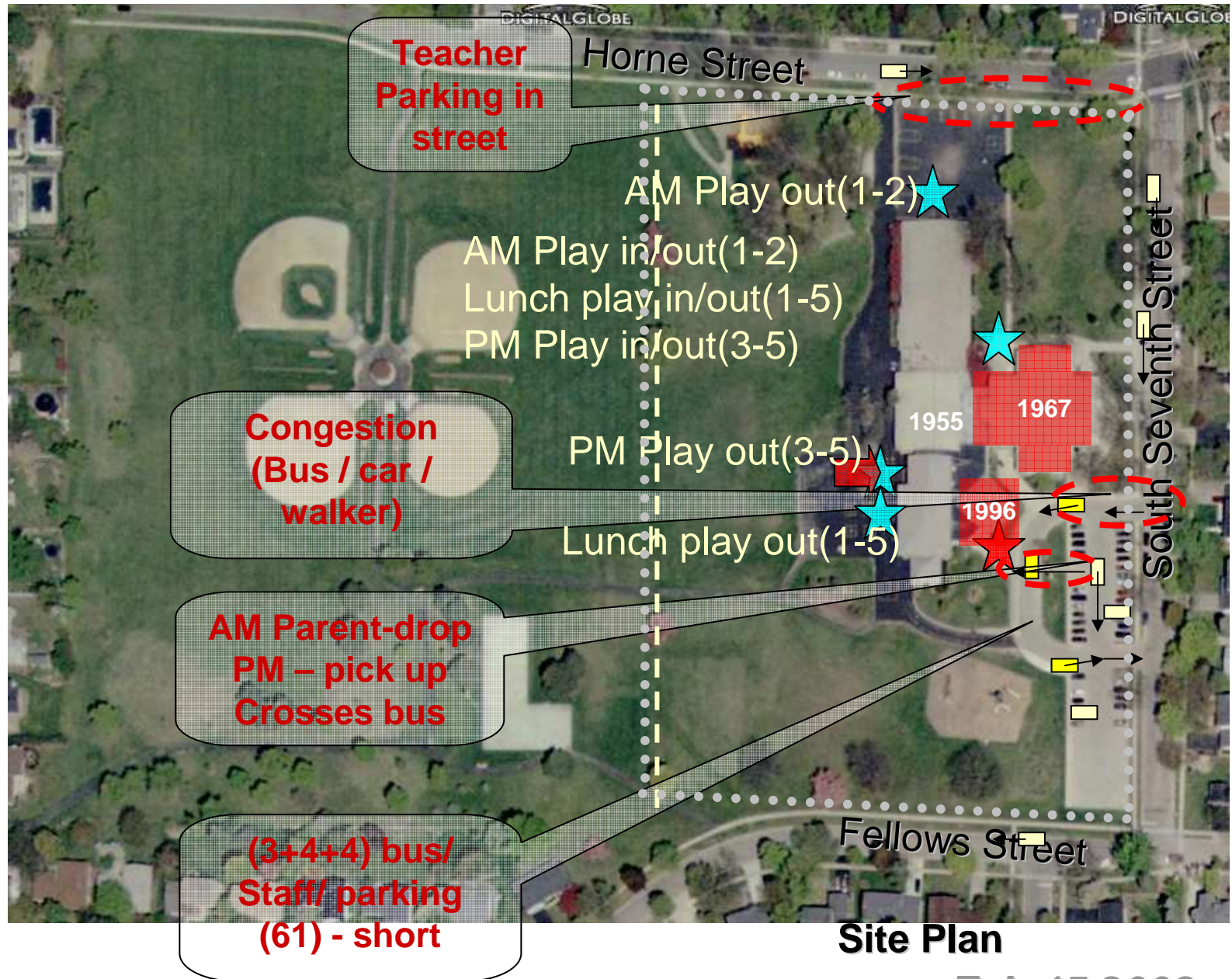
1996



Site Plan

Feb 15 2008

Davis Elementary School



Davis Elementary School

K-5 (-4 Sec):

K 2

Grades 1-5 19

544 21



Main / Lower Floor

Feb 15 2008

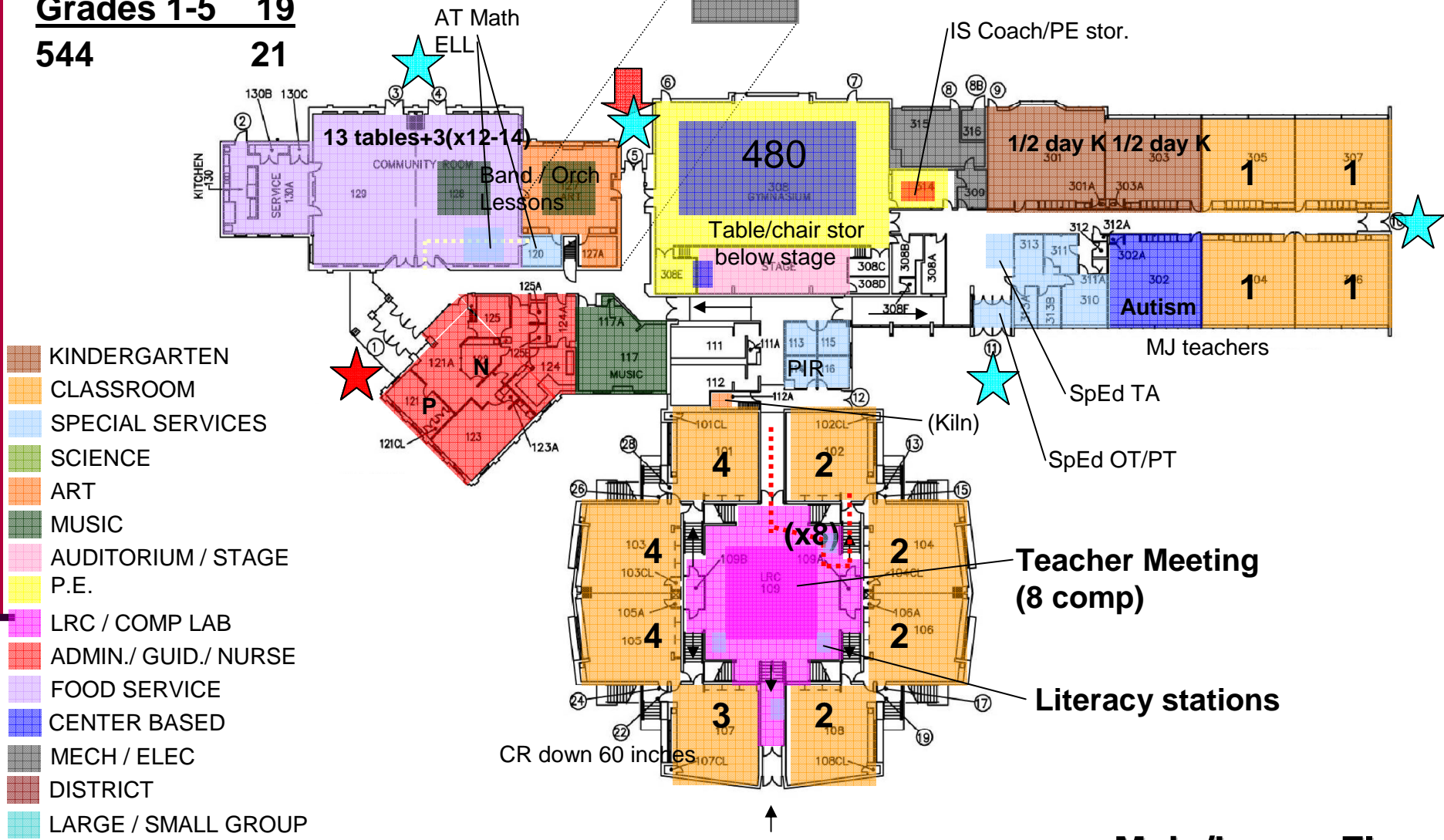
Davis Elementary School

K-5 (-4 Sec):

K 2

Grades 1-5 19

544 21



Main/Lower Floor

Feb 15 2008

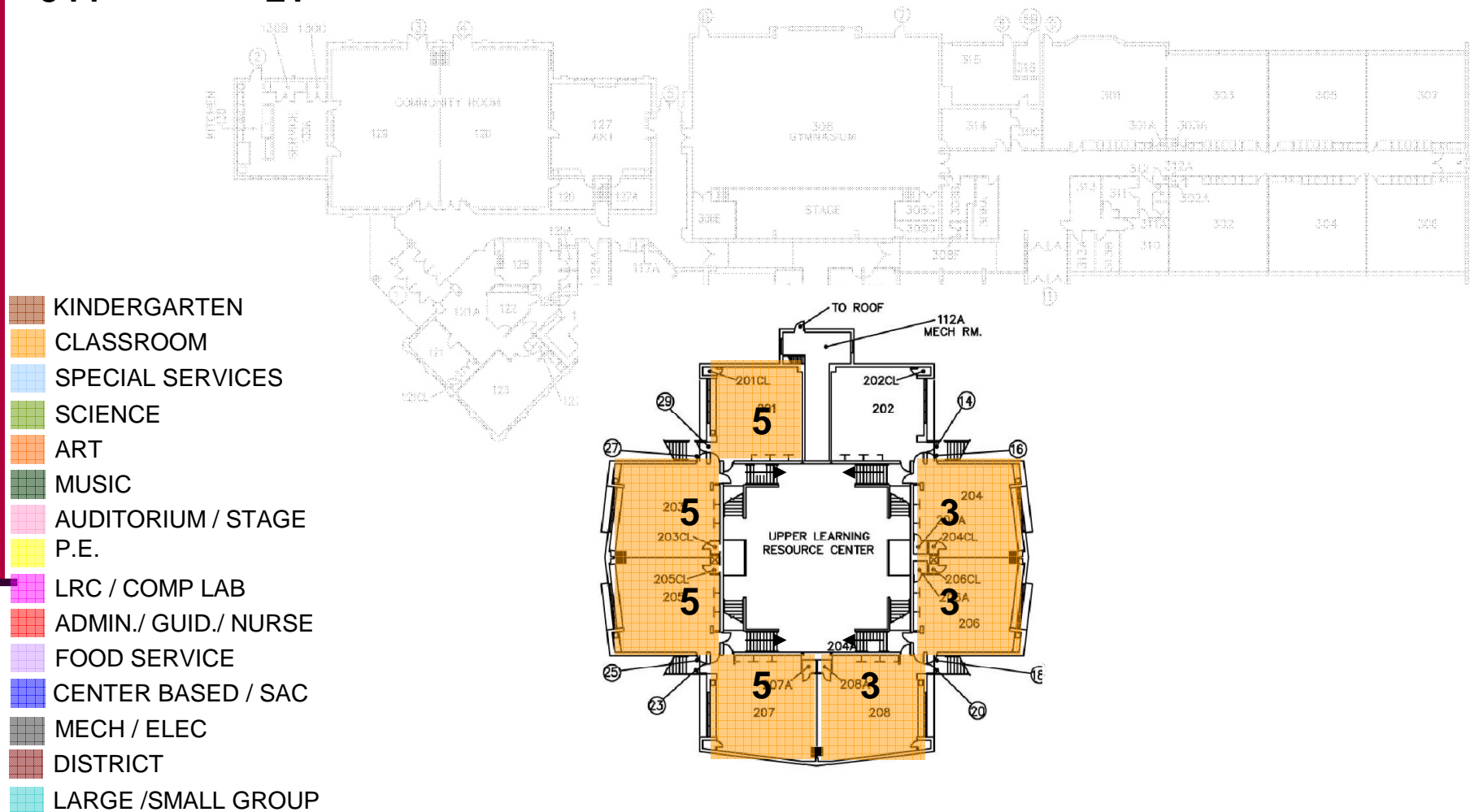
Davis Elementary School

K-5 (-4 Sec):

K 2

Grades 1-5 19

544 21



Upper Floor

Feb 15 2008

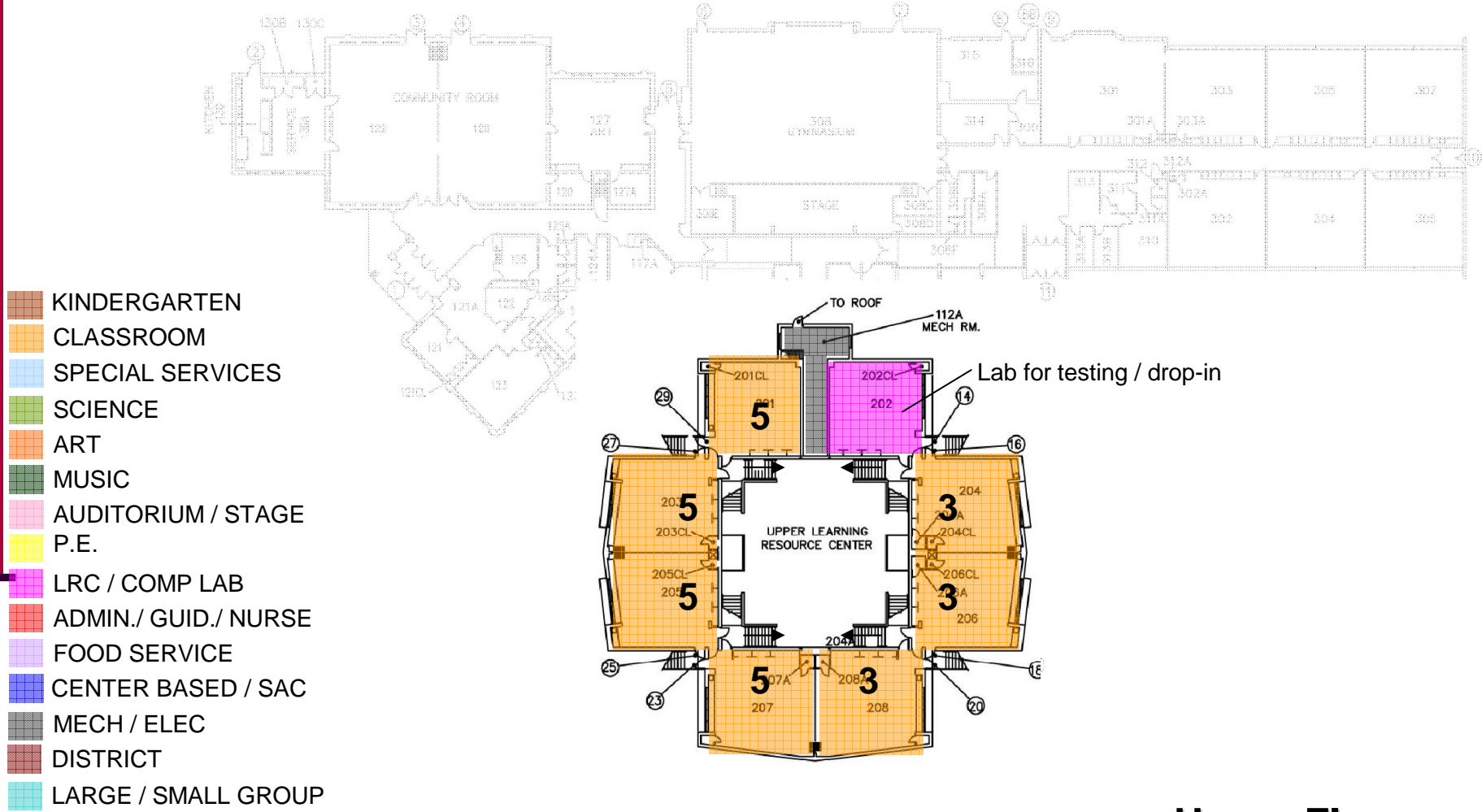
Davis Elementary School

K-5 (-4 Sec):

K 2

Grades 1-5 19

544 21

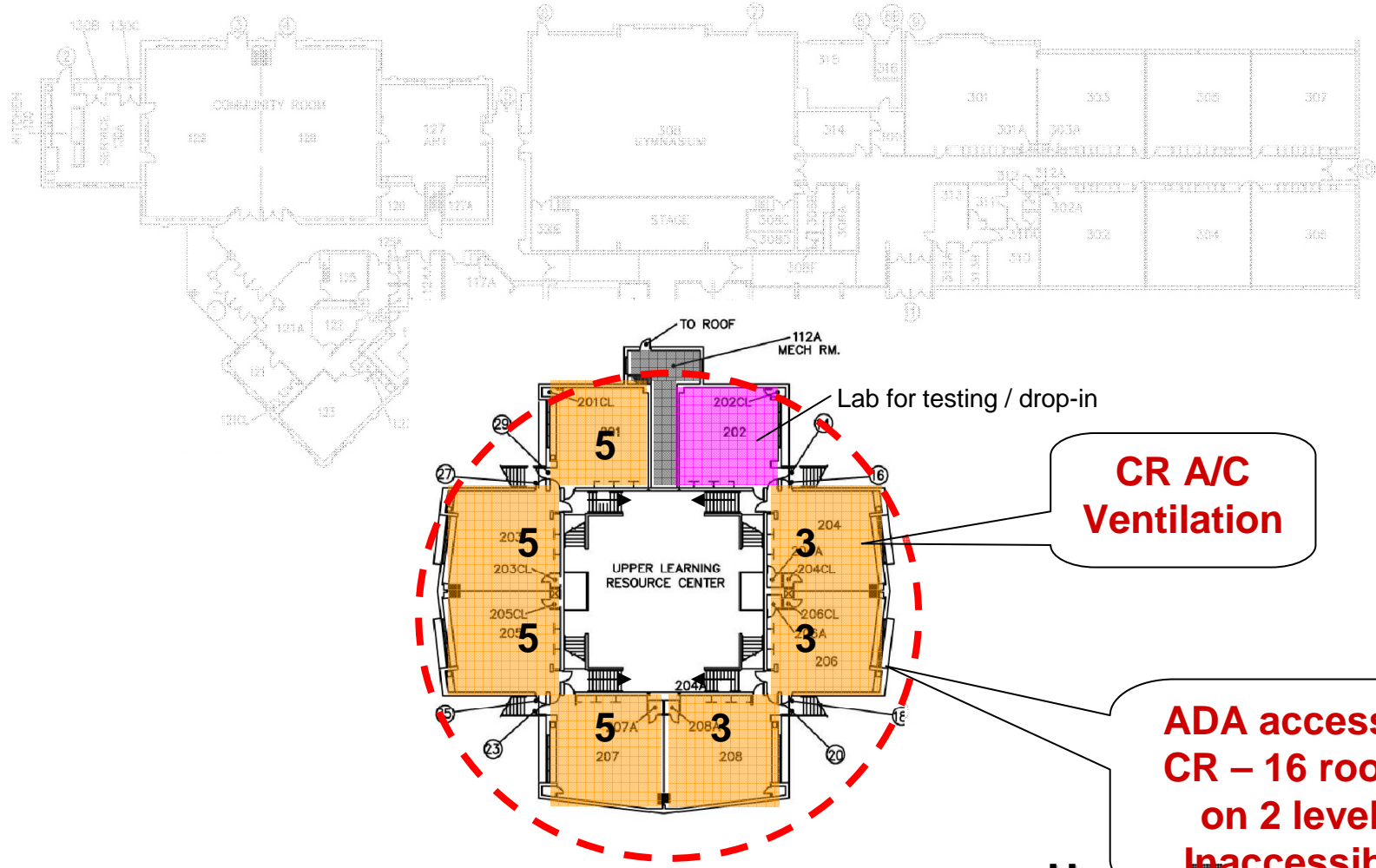


Upper Floor

Feb 15 2008

Davis Elementary School

Needs:

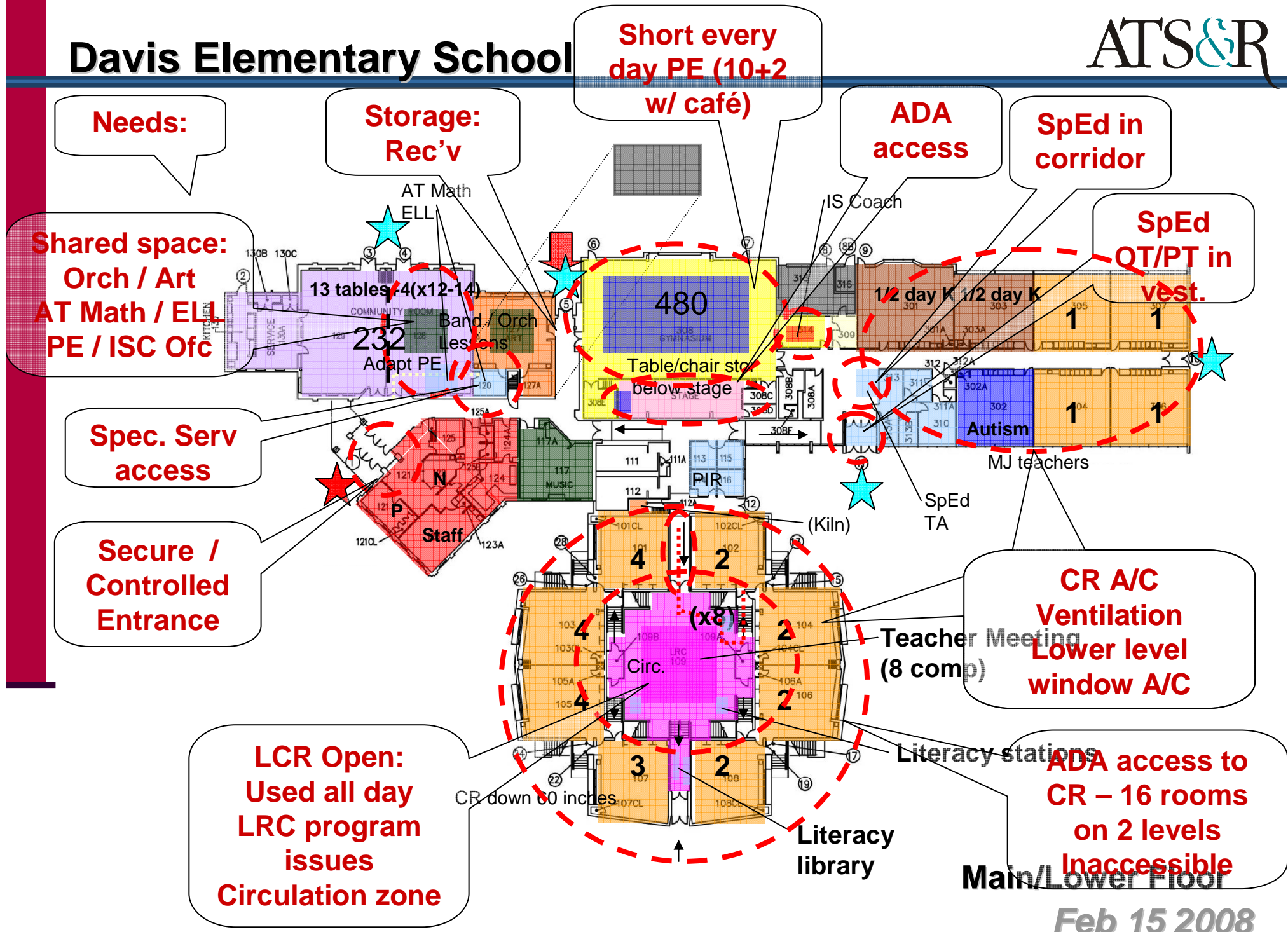


Upper Floor

Feb 15 2008

Davis Elementary School

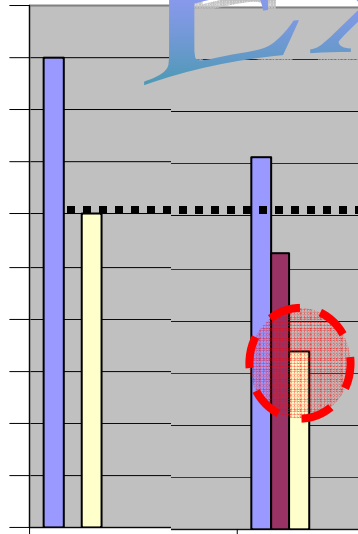
ATS&R



KINDERGARTEN ROOMS

Square Footage

1,600
1,500
1,400
1,300
1,200
1,100
1,000
900
800
700
600



MDE

Davis (K-5)

Example

HIGH
TYPICAL
LOW

1,509

1,314

1,392

1,509

1,127

1,392

1,509

940

1,392

1,200 sf or large
Less than 1,200 s

2

1,509

1

1,314

2

1,392

1

940

TOTAL

2

3,018

2

2,254

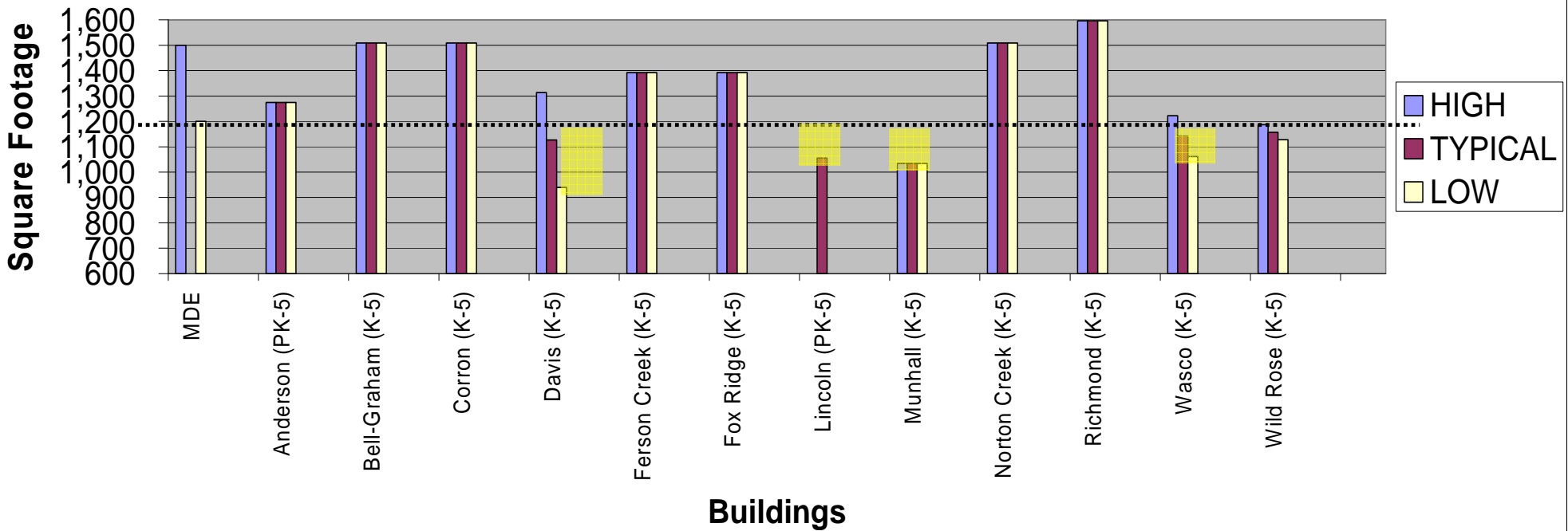
2

2,784

KINDERGARTEN ROOMS– ELEMENTARY SCHOOLS

	MDE	Anderson (PK-5)	Bell-Graham (K-5)	Corron (K-5)	Davis (K-5)	Ferson Creek (K-5)	Fox Ridge (K-5)	Lincoln (PK-5)	Munhall (K-5)	Norton Creek (K-5)	Richmond (K-5)	Wasco (K-5)	Wild Rose (K-5)	
HIGH	1,500	1,274	1,509	1,509	1,314	1,392	1,392		1,035	1,509	1,596	1,223	1,187	-
TYPICAL		1,274	1,509	1,509	1,127	1,392	1,392	1,055	1,035	1,509	1,596	1,142	1,158	#DIV/0!
LOW	1,200	1,274	1,509	1,509	940	1,392	1,392		1,035	1,509	1,596	1,061	1,128	-
	2	2	2	2	1	2	2			2	2	1		16.0
1,200 sf or larger					1			1	2			1	1	
Less than 1,200 sf					940			1,055	1,035			1,061	1,187 1,128	7.0
TOTAL	2	2	2	2	2	2	2	1	2	2	2	2	0	23.0

KINDERGARTEN ROOMS



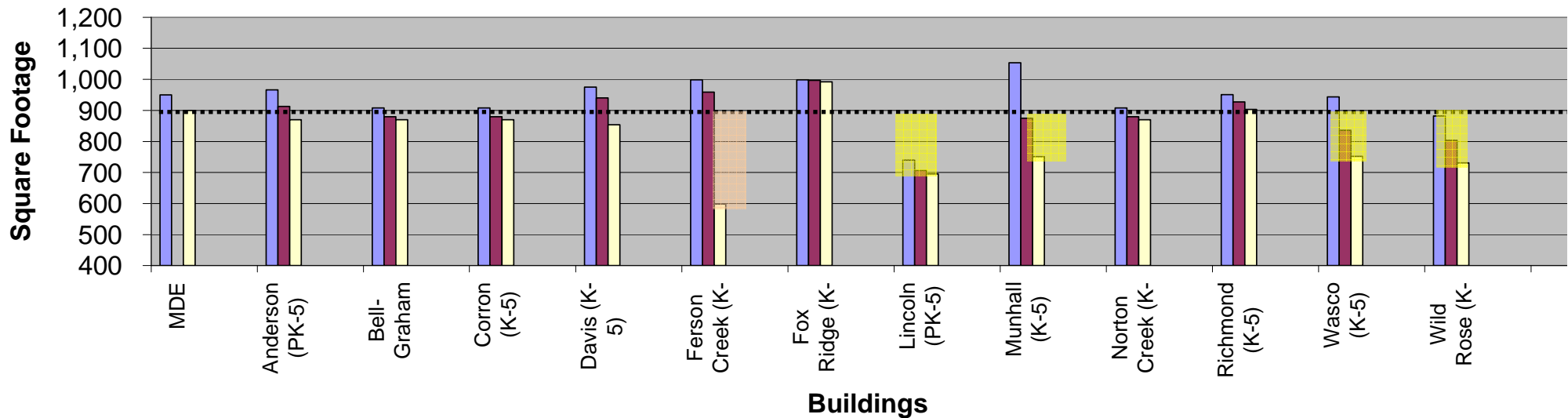
CLASSROOMS— ELEMENTARY SCHOOLS

MDE	Anderson (PK-5)	Bell-Graham (K-5)	Corron (K-5)	Davis (K-5)	Ferson Creek (K-5)	Fox Ridge (K-5)	Lincoln (PK-5)	Munhall (K-5)	Norton Creek (K-5)	Richmond (K-5)	Wasco (K-5)	Wild Rose (K-5)	
950	966	908	908	975	998	998	740	1,053	908	951	944	882	-
	913	880	880	940	959	997	706	875	880	927	836	803	#DIV/0!
900	870	870	870	854	598	992	695	751	870	903	752	731	-

1966												11,053											
2944						13998		13998				2975				3951		4944					
5940						5994		4994				3940				6940		2933					
3914	5908	5908	10975	4940	1992			1992				2936		5908	6903	1900							
6870	15870	14870	2894	3854	2598					1740		2825	14870			4830		2882					
										1721		3801					1758		8873				
										4705		4751					7752		3742				
										4695								7738					
																		1731					

[illegible]

CLASSROOMS

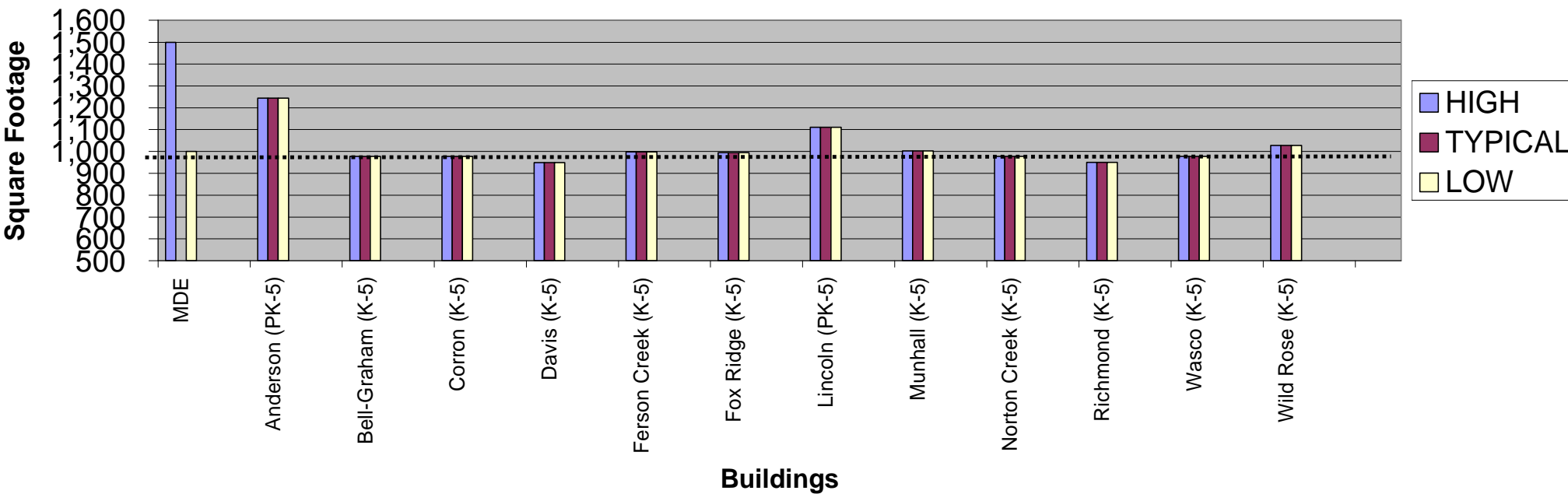


NOTES: . Willow Creek Art room used as a classroom (11/17/18)

ART ROOMS – ELEMENTARY SCHOOLS

		Anderson (PK-5)		Bell-Graham (K-5)		Corron (K-5)		Davis (K-5)		Ferson Creek (K-5)		Fox Ridge (K-5)		Lincoln (PK-5)		Munhall (K-5)		Norton Creek (K-5)		Richmond (K-5)		Wasco (K-5)		Wild Rose (K-5)			
MDE																											
1,500		1,244	978	978	949	998	994	1,111	1,003	978	951	978	1,028	-													
		1,244	978	978	949	998	994	1,111	1,003	978	951	978	1,028	#DIV/0!													
1,000		1,244	978	978	949	998	994	1,111	1,003	978	951	978	1,028	-													
		1	1,244					0.5	1,111	1	1,003		1	1,028													
1,000 sf or larger																											
Less than 1,000 sf			1	978	1	978	1	949	1	998	1	994			1	978	1	951	1	978							
TOTAL		1	1,244	1	978	1	978	1	949	1	998	1	994	1	556	1	1,003	1	978	1	951	1	978	1	1,028	0	-

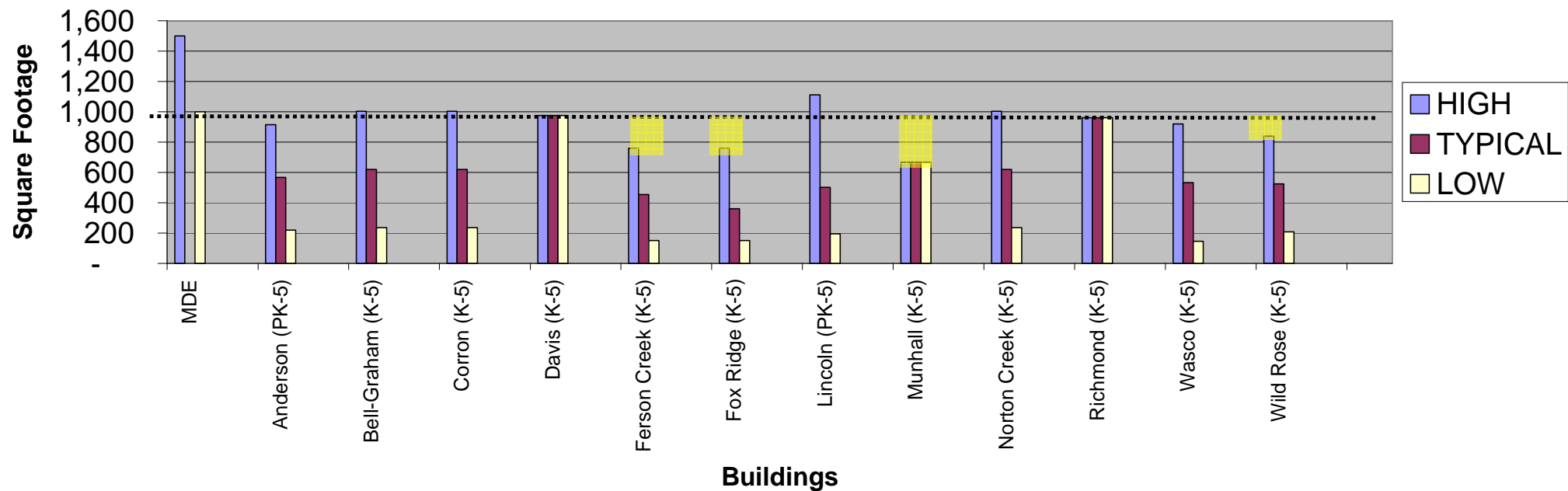
ART / PROJECT



MUSIC ROOMS – ELEMENTARY SCHOOLS

MDE	Anderson (PK-5)	Bell-Graham (K-5)	Corron (K-5)	Davis (K-5)	Ferson Creek (K-5)	Fox Ridge (K-5)	Lincoln (PK-5)	Munhall (K-5)	Norton Creek (K-5)	Richmond (K-5)	Wasco (K-5)	Wild Rose (K-5)	
1,500	914	1,003	1,003	975	759	759	1,111	667	1,003	960	919	840	-
	567	620	620	975	455	361	500	667	620	960	532	524	#DIV/0!
1,000	219	236	236	975	150	150	195	667	236	960	145	208	-
		1 1,003	1 1,003				0.5 1,111		1 1,003				
1,000 sf or larger					1 759	1 759							
Less than 1,000 sf	1 914	1 236	1 236	1 975	1 150	1 173	1 195	1 667	1 236	1 960	1 145	1 208	
	1 219				1 150								
TOTAL	2 1,133	2 1,239	2 1,239	1 975	2 909	3 1,082	2 751	1 667	2 1,239	1 960	2 1,064	2 1,048	0 -

MUSIC

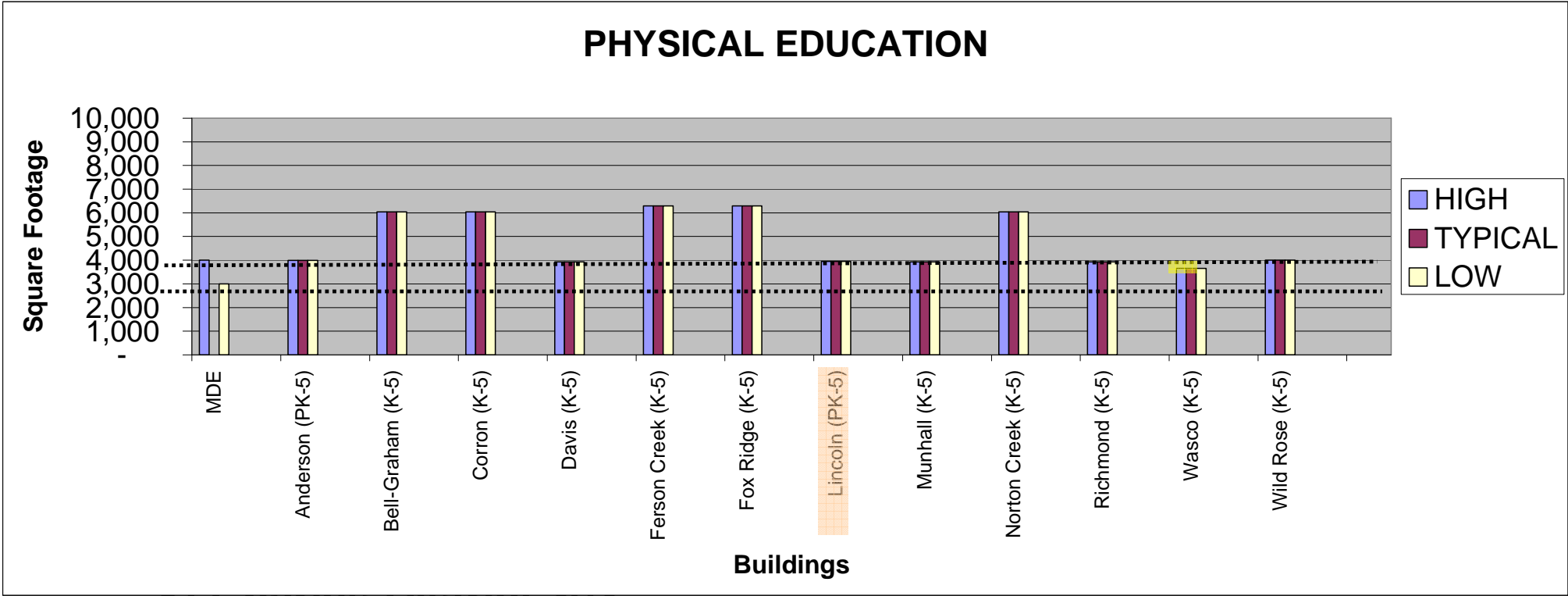


TES: . Lincoln Art room shared with Music

St Charles District 303

PE – ELEMENTARY SCHOOLS

		Anderson (PK-5)		Bell-Graham (K-5)		Corron (K-5)		Davis (K-5)		Ferson Creek (K-5)		Fox Ridge (K-5)		Lincoln (PK-5)		Munhall (K-5)		Norton Creek (K-5)		Richmond (K-5)		Wasco (K-5)		Wild Rose (K-5)	
MDE	4,000	3,990	6,036	6,036	3,930	6,300	6,300	3,951	3,930	6,036	3,930	3,650	4,000												
		3,990	6,036	6,036	3,930	6,300	6,300	3,951	3,930	6,036	3,930	3,650	4,000												
	3,000	3,990	6,036	6,036	3,930	6,300	6,300	3,951	3,930	6,036	3,930	3,650	4,000												
		1 3,990	1 6,036	1 6,036	1 3,930	1 6,300	1 6,300	0.5 3,951	1 3,930	1 6,036	1 3,930	1 3,650	1 4,000												
3,000 sf or larger																									
Less than 3,000 sf																									
TOTAL		1 3,990	1 6,036	1 6,036	1 3,930	1 6,300	1 6,300	1 1,976	1 3,930	1 6,036	1 3,930	1 3,650	1 4,000	0											



Agenda...

- Introduction
- Approach to Evaluation
- Building utilization review
- **Small group activity**
- Reporting / Prioritization

Main themes from groups at Summit 303 meeting on facilities (Mar 13)

- Safety and Security
- Increase Classrooms / class size - crowding
- Indoor air quality
- ADA / accessibility
- Space for programs / future needs

Your Input...

- List the sources of pride and strengths of **Davis Elementary School**.

- List **facility** improvements (needs) that should be made for **Davis Elementary School**.

Record:

All of the group's reported areas of strengths and needs.

Group Prioritize:

Identify the five (5) most significant needs.

C.U.S.D 303
St. Charles School District

<u>STRENGTHS</u>	<u>Facility Needs</u>
GOOD NATURAL LIGHT	NO STAFF WORKROOM
AMPLE PARKING	Gym SPACE TOO SMALL
CLASSROOM SIZES	NEED TO SEPARATE BUS TRAFFIC FROM PARENT DROP-OFF
TECHNOLOGY IS UP-TO-DATE	POOR VENTILATION

SAVED

List the sources of pride and strengths of Davis Elementary School

- Sense of / Pride in Community
- Excellent staff
- Quality / quantity of land
- Art work
- Average classroom size
- Community room – lighting, access, artwork
- Efficient use of limited space
- Big kid / little kid separation

Identify the top 5 facility improvements/ needs that should be made for Davis Elementary School

1. New L.R.C. – Accessibility is part of issue (21)
2. Appropriately sized & quantity of teaching spaces – kindergarten, OT/PT, special education, etc. (12)
3. Equity among other elementary facilities in newer district (11)
4. Access to and quantity of technology – due to facility constraints; i.e. equip. on carts with stairs (8)
5. Indoor air quality – related to drainage/flooding issue, lower level classrooms (7)
6. Building security – including after hours use of facility (7)
7. Traffic congestion – site circulation, lack of parking, proximity of play areas to streets, public on school play equipment (7)

(the number in parenthesis () indicates the number of votes received during the prioritization process)

Other:

- A.D.A. accessibility (2)
- Building wide storage needed (1)
- Lack of staff / student toilets – quality of, do we meet minimum requirements? (1)
- Air conditioning (1)
- Natural light / ventilation to lower level classrooms – limited windows (0)
- Site drainage issue, snow/ice, N/E/W, some remediation occurred winter 2007/2008 (0)
- Appropriate electrical / Classroom lightings – can't use fans (0)

(the number in parenthesis (__) indicates the number of votes received during the prioritization process)

Thank You...