

ATS&R



Corron Elementary Community Meeting

April 30, 2008

Agenda...

- Introduction
- Approach to Evaluation
- Building utilization review
- Small group activity
- Reporting / Prioritization

ATS&R Background- School Specialists

- 63 Years as school specialists
- 98% of workload is PreK-12 schools
- Staff of 84 with in-house services:
 - Pre-Referendum Planning
 - Facilities Master Planning
 - Architectural
 - Mechanical/ Electrical
 - LEED Certification
 - Technology
 - Site Development
 - Construction Administration
 - Interior Design
 - Specifications/ Quality Control
 - Total Energy Checkpoint
- National Exposure
 - School Experience Nationally and Internationally
 - CEFPI-AASA-ASBO-NSBA-ITTE-CSI-NASSP
 - Recognized Presenters/Authors



District 303 Vision Statement

C.U.S.D 303
St. Charles School District

“The District 303 School Community empowers and inspires ALL to

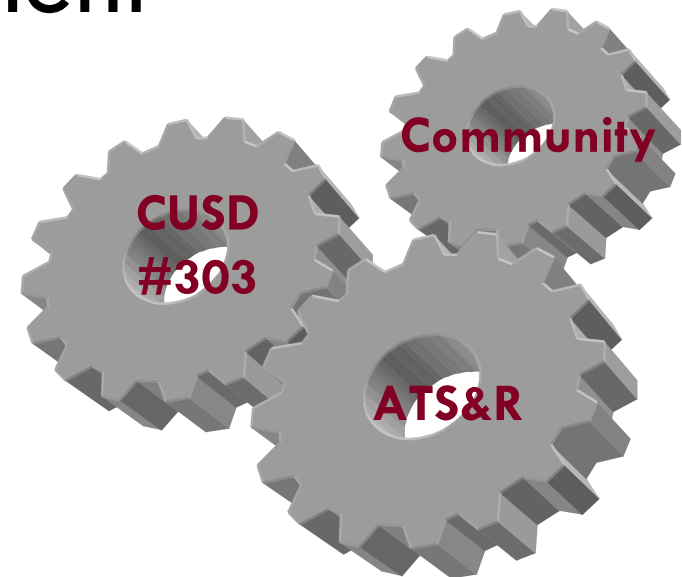
- Attain excellence
- Learn with passion, and
- Live with integrity in a changing world.”

Agenda...

- Introduction
- **Approach to Evaluation**
- Building utilization review
- Small group activity
- Reporting / Prioritization

Approach to Evaluation

- Comprehensive assessment of all schools
- Community group involvement
- Developing a Master Facilities Plan



St. Charles North High School

Develop a Master Facilities Plan

Providing a solid foundation for the Master Plan

- Supported by the assessment and community engagement process
- Responds to research on demographics, space, etc.
- Open, honest communication with the community
- Guide for planning and improvement projects for the next 20 years



STANDARDS - Elementary Schools



ROOM SIZES	Min	High				
Kindergarten Room	1,200	1,500	15 - 25	students	plus-	toilets
Classrooms	900	950	15 - 25	students		
Early Childhood	1,000	1,400	15 - 25	children	incl.-	toilet / coats
Special Education						
Small Group	450		5 - 8	students		
Classroom	800					
Lab	1,200					
Art (multi purpose CR / Lab)	1,000	1,500				
Music (General)	1,000	1,500				
Physical Education (PE)	3,000	4,000				
Multipurpose room	1,700					
Adaptive PE	500					
PE storage	300					
Learning Resource Center						
Reading (w/ comp. resource)	2,800	3,650	350 - 600	students		
Support	600					
Computer Lab	1,000	1,200	20 - 30	students		
Food Service						
Dining	2,000	3,400	350 - 600	students	3 periods	
Kitchen	500	1,000			serving -	minor prep
Support	1,300	2,200				
Student Services (Admin / Staff)	2,700	3,100	350 - 600	students		
Resource / Support						
Small Group	150	200	5 - 10	students		
Large Group	600	1,500	60 - 125	students		

SITE SIZES	Min	High				
Site (acres) 5 +1/100 students	9	11	350 - 600	students		
Site (acres) 10-15 +1/100 students (plus ROW, wetlands, retention, on site water or septic systems)	14	21	350 - 600	students		

EXPECTATIONS - All Schools

Safety:

Clear separation of bus / staff / visitor / walker site circulation
Site lighting

Security:

Active / passive systems
Controlled access entry / community use zone (s)

Accessibility:

ADA access to all teaching stations, community, staff areas
Appropriate special services rooms

Building:

Natural light to Classrooms
Appropriate type / size of teaching stations (Flexibility)
Core capacity to match building capacity

Ventilation:

Code required (+/- 12-15) CFM per person

Electrical:

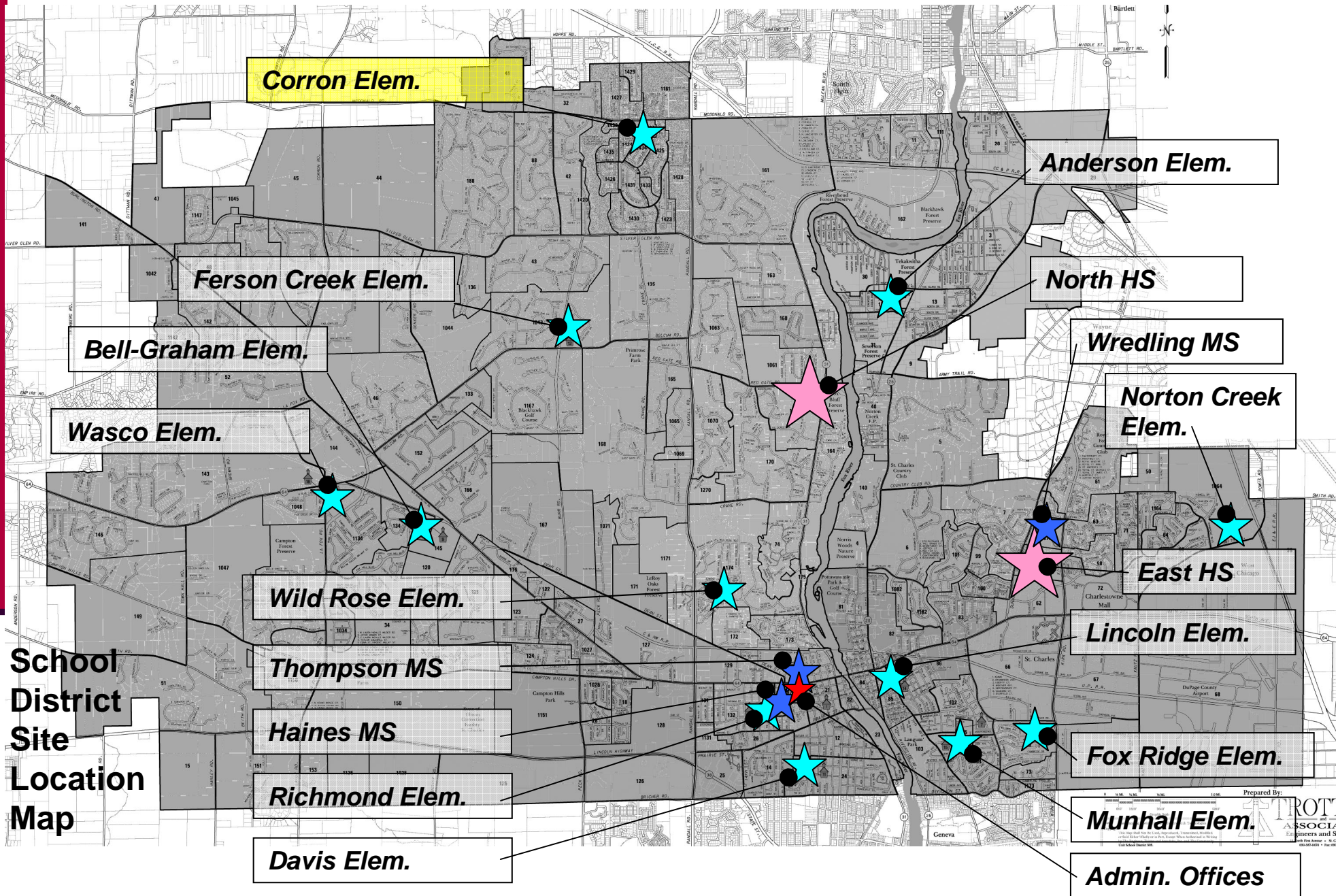
Properly sized electrical to support needs of site and building

Technology:

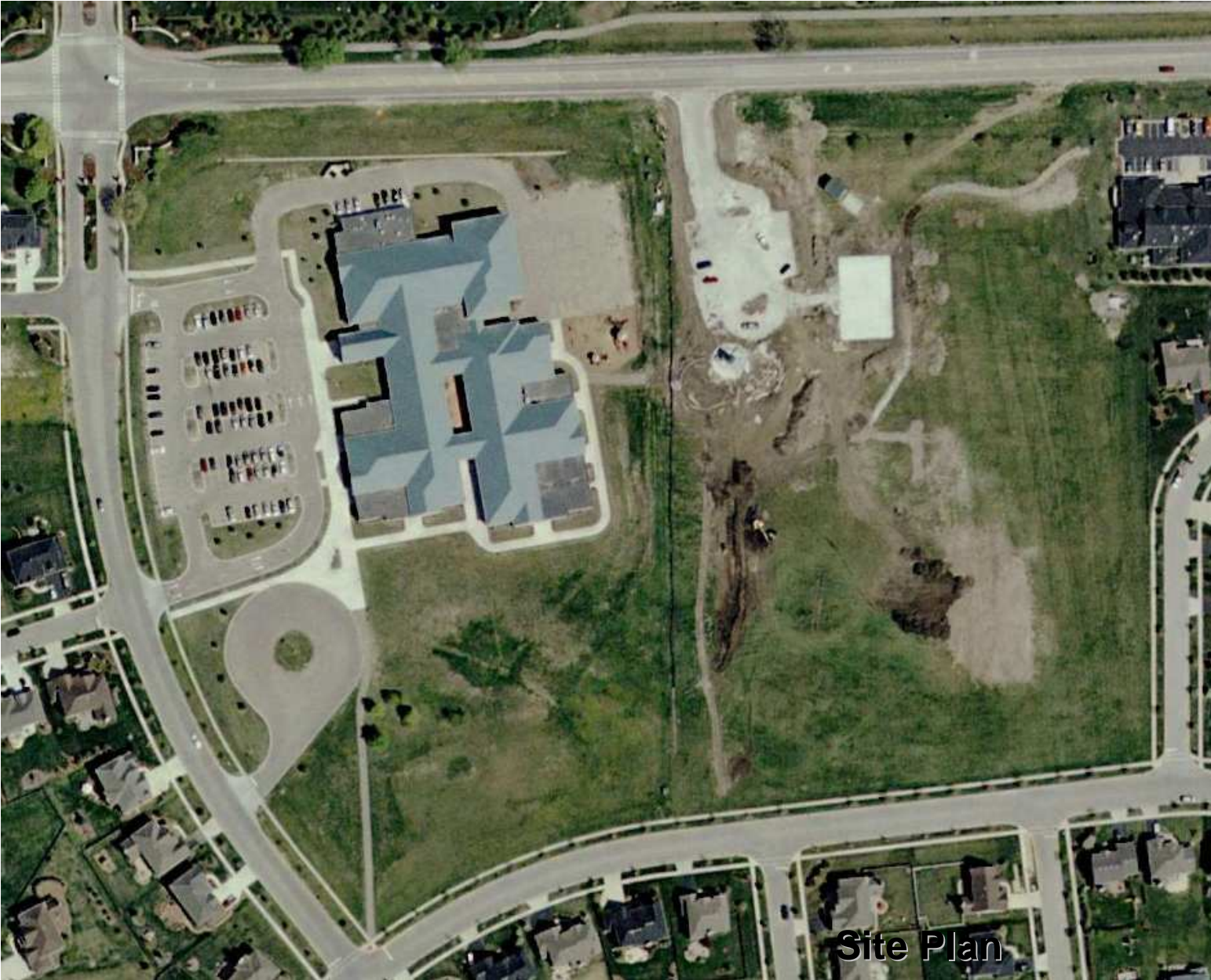
Appropriate Voice / Video / Data systems

Agenda...

- Introduction
- Approach to Evaluation
- **Building utilization review**
- Small group activity
- Reporting / Prioritization



Corron Elementary School



Site Plan

Feb 15 2008

Corron Elementary School

SITE:

11.0 Acres

SCP guidelines:
5-11 acres

BUILDING:

75,000 sf

597 Students

126 sf / student

MDE guidelines:
110-135 sf / student

Built – 2003

Add'n –



Site Plan

Feb 15 2008

Corron Elementary School



**Pick PM K-1
main entry / 2-5
Event parking
short**

**(2) Sp Ed bus
drop + daycare
With parent drop
/ pick up**

**Field area
unusable
Shared with
Patriots**

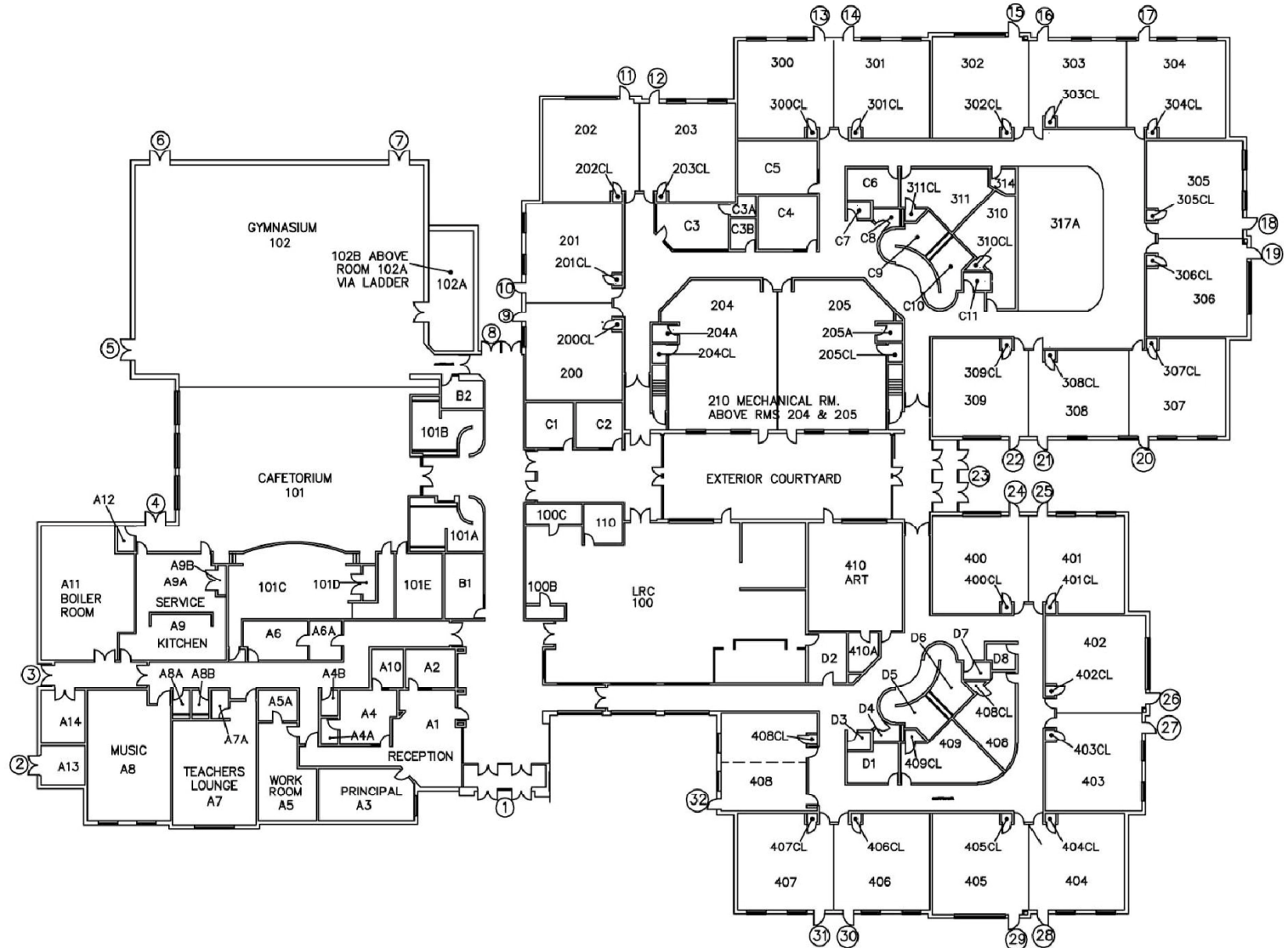
**Play structure
tight**

**PE
option**

Site Plan

Feb 15 2008

Corron Elementary School



Main Floor

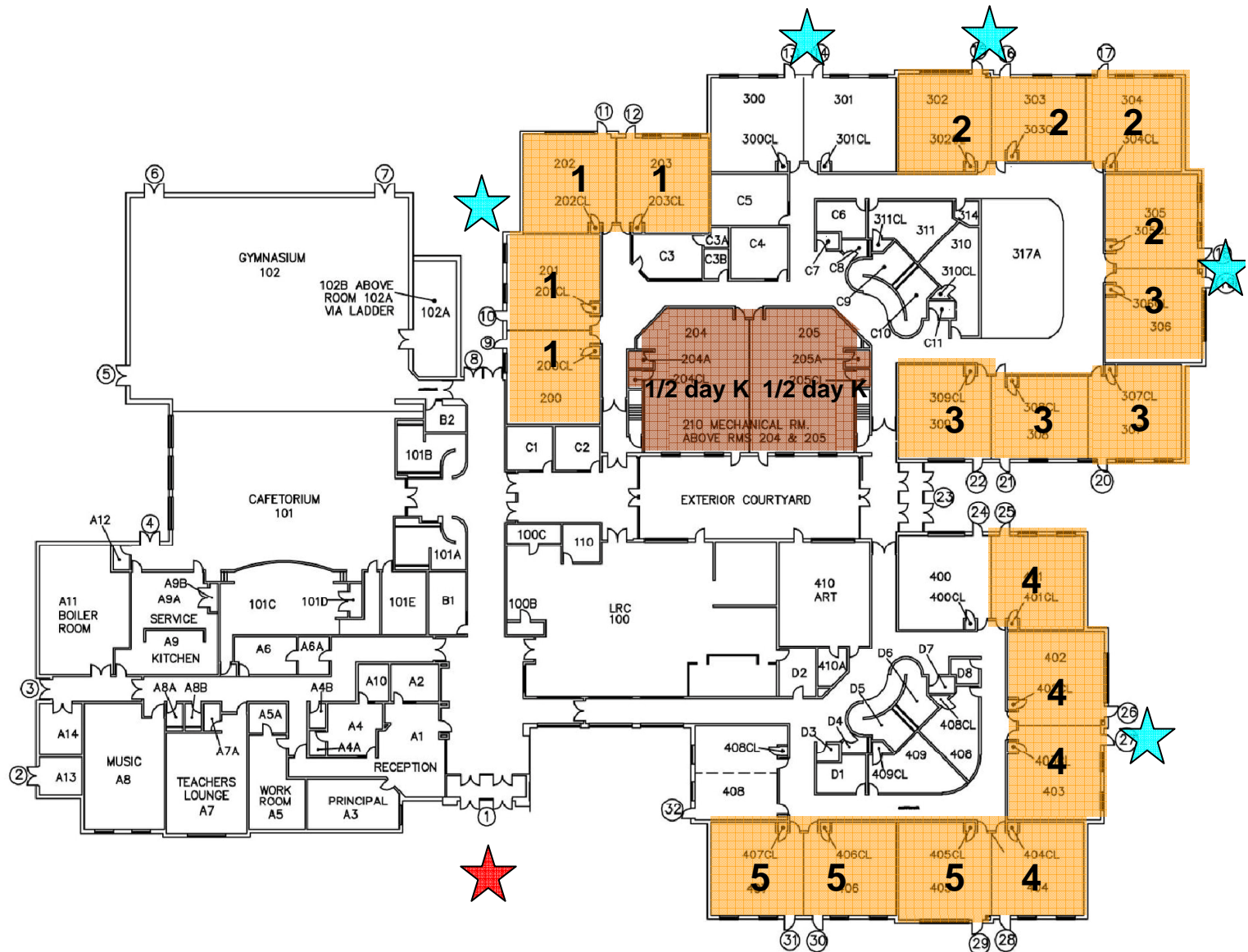
Feb 15 2008

Corron Elementary School

K-5 (-4 Sec):

K	2
Grades 1-5	19
	21

- KINDERGARTEN
- CLASSROOM
- SPECIAL SERVICES
- SCIENCE
- ART
- MUSIC
- AUDITORIUM / STAGE
- P.E.
- LRC / COMP LAB
- ADMIN./ GUID./ NURSE
- FOOD SERVICE
- CENTER BASED / SAC
- MECH / ELEC
- DISTRICT
- LARGE GROUP



Main Floor

Feb 15 2008

Corron Elementary School

K-5 (-4 Sec):

K	2
Grades 1-5	19
	21

- KINDERGARTEN
- CLASSROOM
- SPECIAL SERVICES
- SCIENCE
- ART
- MUSIC
- AUDITORIUM / STAGE
- P.E.
- LRC / COMP LAB
- ADMIN./ GUID./ NURSE
- FOOD SERVICE
- CENTER BASED / ASC
- MECH / ELEC
- DISTRICT
- LARGE / SMALL GROUP

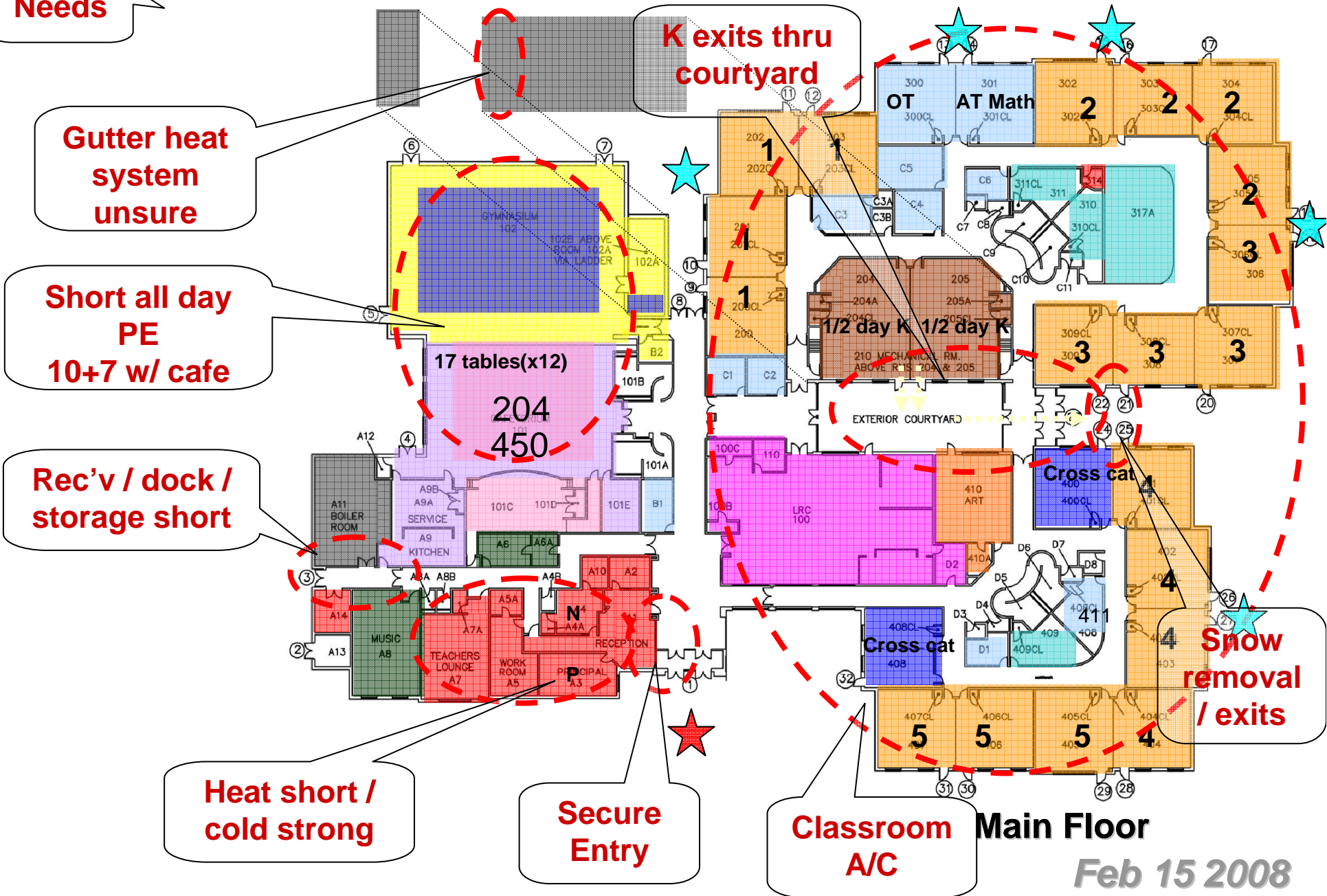


Main Floor

Feb 15 2008

Corron Elementary School

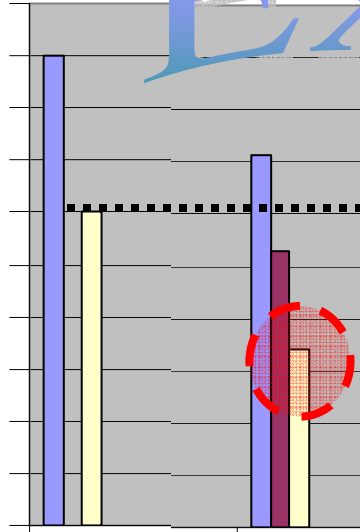
Needs



KINDERGARTEN ROOMS

Square Footage

1,600
1,500
1,400
1,300
1,200
1,100
1,000
900
800
700
600



MDE

Davis (K-5)

Example

HIGH
TYPICAL
LOW

	1,509	1,314	1,392
	1,509	1,127	1,392
	1,509	940	1,392

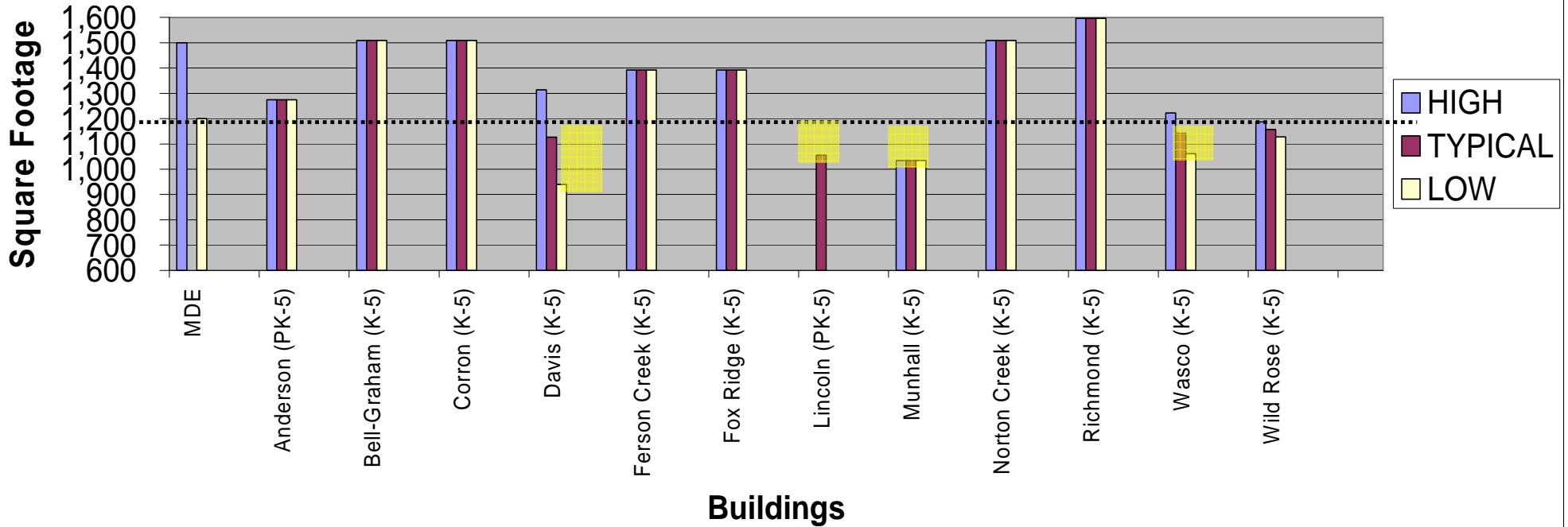
	2	1,509	1	1,314	2	1,392
1,200 sf or large						
Less than 1,200 s			1	940		

TOTAL 2 3,018 2 2,254 2 2,784

KINDERGARTEN ROOMS- ELEMENTARY SCHOOLS

	MDE	Anderson (PK-5)	Bell-Graham (K-5)	Corron (K-5)	Davis (K-5)	Ferson Creek (K-5)	Fox Ridge (K-5)	Lincoln (PK-5)	Munhall (K-5)	Norton Creek (K-5)	Richmond (K-5)	Wasco (K-5)	Wild Rose (K-5)															
HIGH	1,500	1,274	1,509	1,509	1,314	1,392	1,392		1,035	1,509	1,596	1,223	1,187	-														
TYPICAL	1,274	1,274	1,509	1,509	1,127	1,392	1,392	1,055	1,035	1,509	1,596	1,142	1,158	#DIV/0!														
LOW	1,200	1,274	1,509	1,509	940	1,392	1,392		1,035	1,509	1,596	1,061	1,128	-														
	2	2	2	2	1	2	2			2	2	1		16.0														
					1			1	2			1	1	7.0														
TOTAL	2	2,548	2	3,018	2	3,018	2	2,254	2	2,784	2	2,784	1	1,055	2	2,070	2	3,018	2	3,192	2	2,284	2	2,315	0	-	totals	23.0

KINDERGARTEN ROOMS



St Charles District 303

CLASSROOMS— ELEMENTARY SCHOOLS

MDE	Anderson (PK-5)	Bell-Graham (K-5)	Corron (K-5)	Davis (K-5)	Ferson Creek (K-5)	Fox Ridge (K-5)	Lincoln (PK-5)	Munhall (K-5)	Norton Creek (K-5)	Richmond (K-5)	Wasco (K-5)	Wild Rose (K-5)	
950	966	908	908	975	998	998	740	1,053	908	951	944	882	-
	913	880	880	940	959	997	706	875	880	927	836	803	#DIV/0!
900	870	870	870	854	598	992	695	751	870	903	752	731	-

1	966							1,053					
2	944				13	998	13	998		3	951	4	944
5	940			10	975	5	994	4		6	940	2	933
3	914	5	908	5	908	4	940	1		6	903	1	900

900 sf or larger
Less than 900 sf

6	870	15	870	14	870	2	894	2	598		1	740	2	825	14	870		4	830	2	882		
						3	854				1	721	3	801				1	758	8	873		
											4	705	4	751				7	752	3	742		
											4	695								7	738		
																				1	731		

mobile

900 sf or larger
Less than 900 sf

11	5	5	14	19	18	0	10	5	15	7	0	0														
6	15	14	5	2	0	10	9	14	0	12	21	0														
TOTAL	17	15,516	20	17,590	19	16,720	19	17,860	21	20,132	18	17,942	10	7,061	19	16,624	19	16,720	15	13,911	19	15,884	21	16,871	0	-

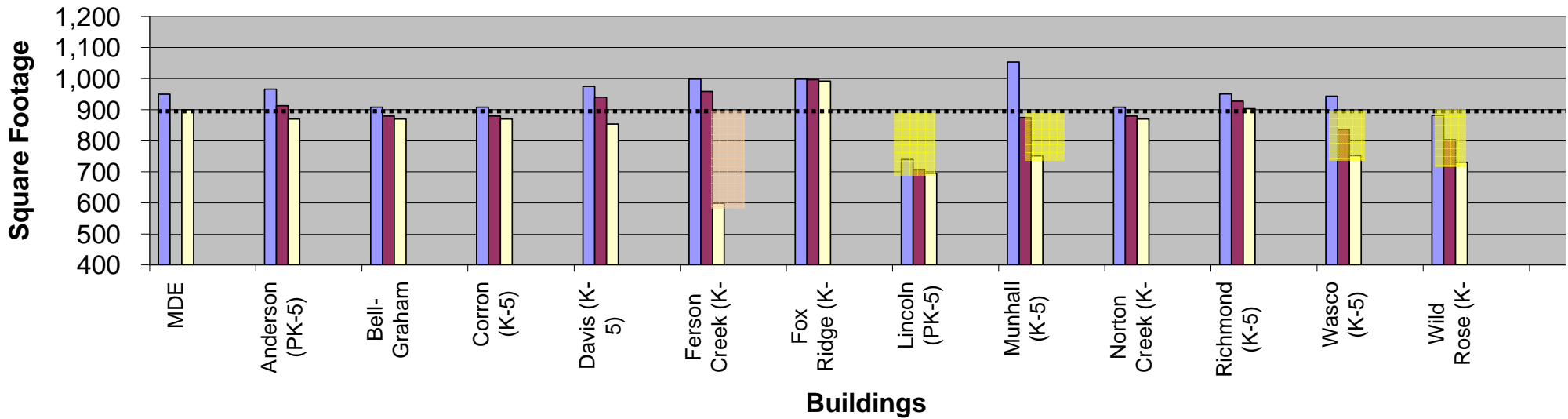
totals

109.0

108.0

217.0

CLASSROOMS

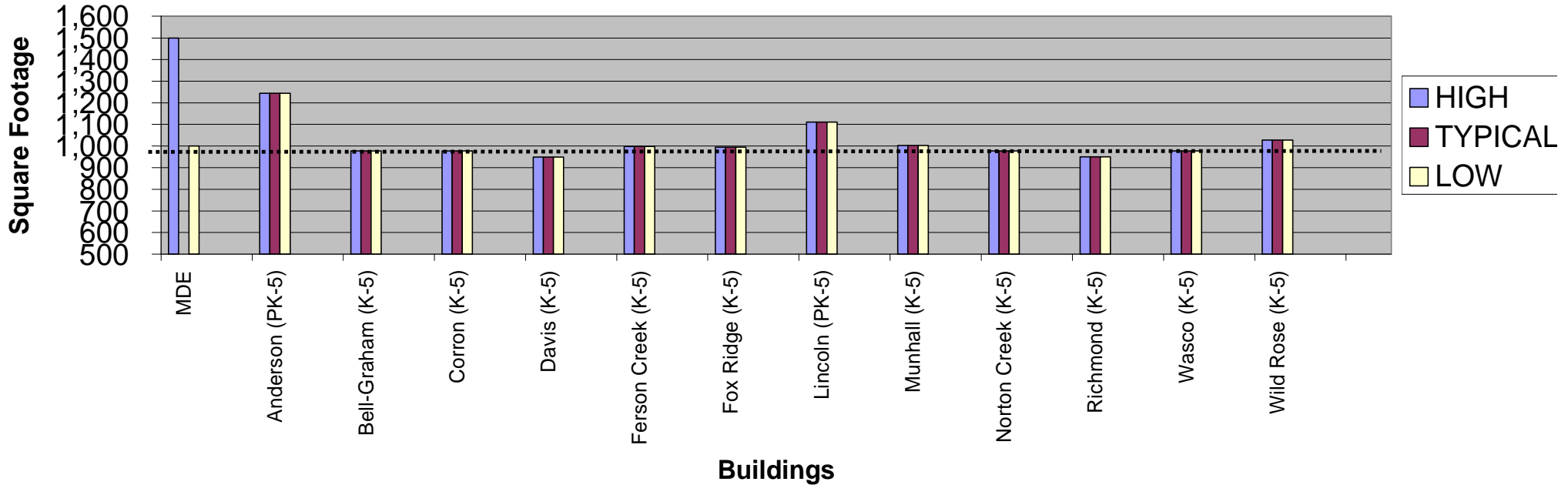


NOTES: Willow Creek Art room used as a classroom (1157 sf)

ART ROOMS – ELEMENTARY SCHOOLS

MDE	Anderson (PK-5)	Bell-Graham (K-5)	Corron (K-5)	Davis (K-5)	Ferson Creek (K-5)	Fox Ridge (K-5)	Lincoln (PK-5)	Munhall (K-5)	Norton Creek (K-5)	Richmond (K-5)	Wasco (K-5)	Wild Rose (K-5)	
1,500	1,244	978	978	949	998	994	1,111	1,003	978	951	978	1,028	-
1,000	1,244	978	978	949	998	994	1,111	1,003	978	951	978	1,028	#DIV/0!
	1,244	978	978	949	998	994	1,111	1,003	978	951	978	1,028	-
1,000 sf or larger	1						0.5	1				1	
Less than 1,000 sf		1	1	1	1	1			1	1	1		
TOTAL	1	1	1	1	1	1	1	1	1	1	1	1	0

ART / PROJECT



TES:

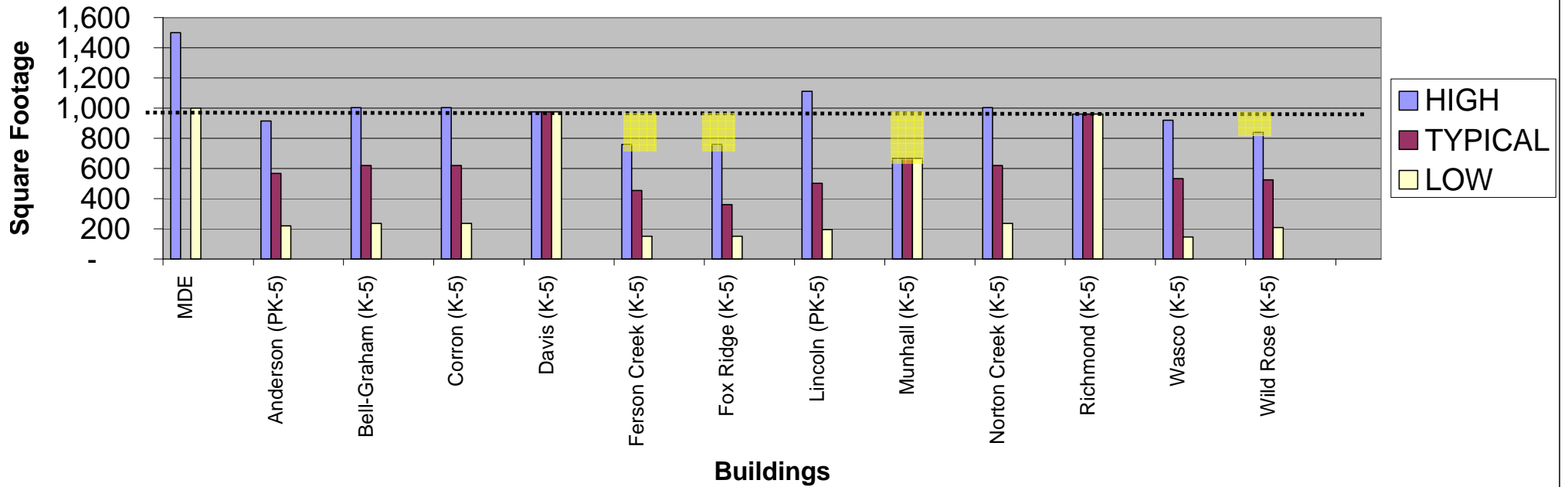
. Lincoln Art room shared with Music

St Charles District 303

MUSIC ROOMS – ELEMENTARY SCHOOLS

	MDE	Anderson (PK-5)	Bell-Graham (K-5)	Corron (K-5)	Davis (K-5)	Ferson Creek (K-5)	Fox Ridge (K-5)	Lincoln (PK-5)	Munhall (K-5)	Norton Creek (K-5)	Richmond (K-5)	Wasco (K-5)	Wild Rose (K-5)													
1,500	914	1,003	1,003	975	759	759	1,111	667	1,003	960	919	840	-													
	567	620	620	975	455	361	500	667	620	960	532	524	#DIV/0!													
1,000	219	236	236	975	150	150	195	667	236	960	145	208	-													
1,000 sf or larger		1	1,003	1	1,003			0.5	1,111	1	1,003															
Less than 1,000 sf	1	914	1	236	1	975	1	759	1	173	1	195	1	667	1	960	1	919	1	145	1	840	1	208		
	1	219	1	236	1	236	1	150	1	150	1	236	1	236	1	236	1	236	1	236	1	236	1	236		
TOTAL	2	1,133	2	1,239	2	1,239	1	975	2	909	3	1,082	2	751	1	667	2	1,239	1	960	2	1,064	2	1,048	0	-

MUSIC



TES: . Lincoln Art room shared with Music

St Charles District 303

Agenda...

- Introduction
- Approach to Evaluation
- Building utilization review
- **Small group activity**
- Reporting / Prioritization

Main themes from groups at Summit 303 meeting on facilities (Mar 13)

- Safety and Security
- Increase Classrooms / class size - crowding
- Indoor air quality
- ADA / accessibility
- Space for programs / future needs

Your Input...

- List the sources of pride and strengths of **Corron Elementary School.**

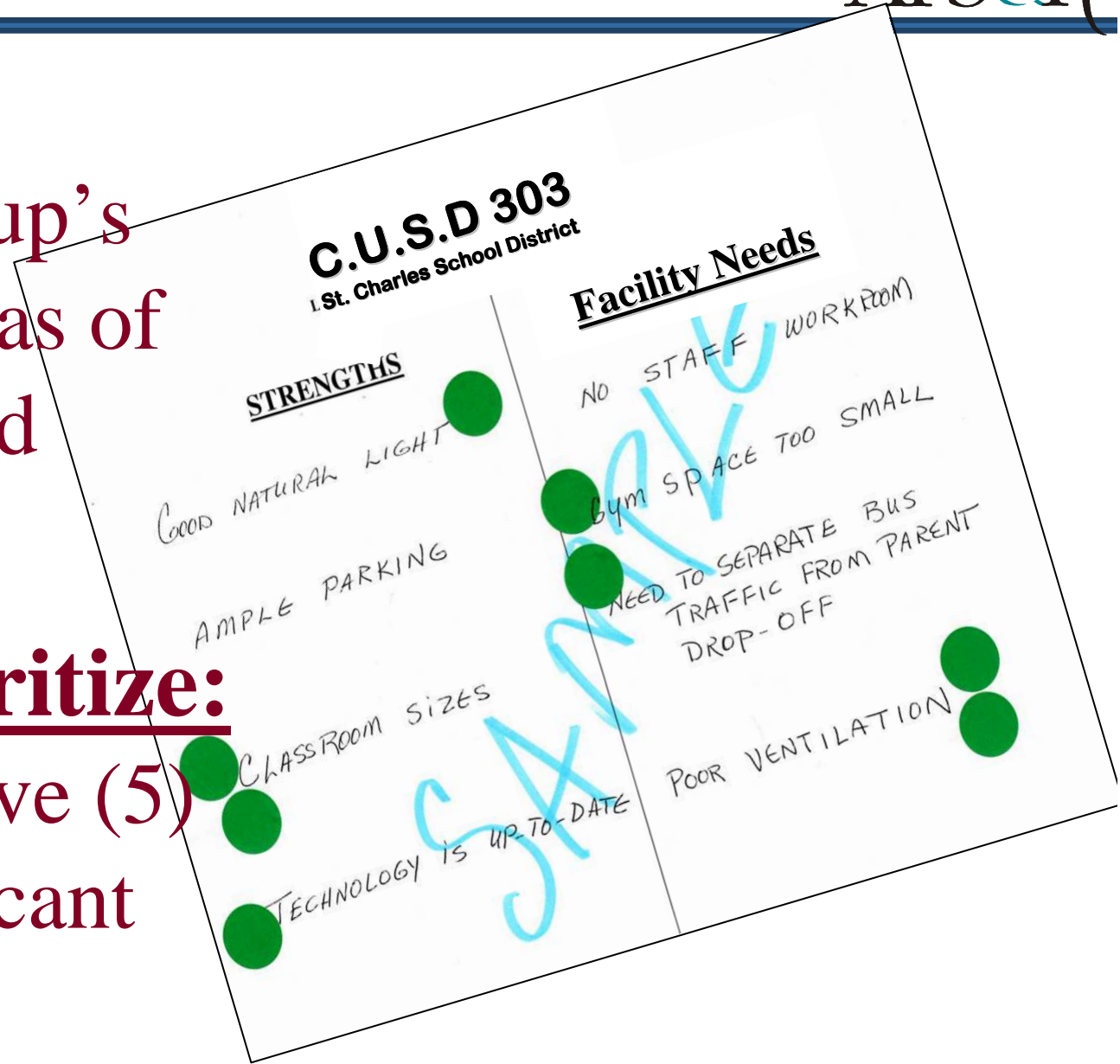
- List **facility** improvements (needs) that should be made for **Corron Elementary School.**

Record:

All of the group's reported areas of strengths and needs.

Group Prioritize:

Identify the five (5) most significant needs.



List the sources of pride and strengths of Corron Elementary School

- Good LRC Layout
- Accessible facility
- Nice toilet facilities
- Appropriate spaces
- Classrooms are within guidelines for square footage
- New building – clean, attractive, Aurturo – Head Custodian
- Good work room / copy room space
- Good separation of grade levels
- Good community / parent involvement
- Activity areas
- Neighborhood school

Identify the top 5 facility improvements/ needs that should be made for Corron Elementary School

1. Air conditioning to address security & health issues – doors are propped open due to ventilation issues (53)
2. Security building wide – at front entry, rear entry, etc. (26)
3. Improve student drop-off / site circulation issue (13)
4. Space to accommodate all day kindergarten (7)
5. Classroom size K-2 – due to high # of students per classroom, 3-5 due to special needs students (5)

(the number in parenthesis () indicates the number of votes received during the prioritization process)

Other:

- Improve south play area – poor grading, etc (3)
- Additional parking spaces – enforcement of handicapped parking spaces, event parking (3)
- More play equipment – tether ball, basketball hoops, more ADA accessible equipment (3)
- Additional / appropriate PE space – students have a shorter lunch period (1)
- Additional supervision of students being dropped off (1)
- Additional classroom coat hooks (0)
- Playground security – due to adjacent public spaces, streets, fence along McDonald's (0)

(the number in parenthesis () indicates the number of votes received during the prioritization process)

Thank You...