

ATS&R



Anderson Elementary Community Meeting

April 29, 2008

Agenda...

- Introduction
- Approach to Evaluation
- Building utilization review
- Small group activity
- Reporting / Prioritization

ATS&R Background- School Specialists

- 63 Years as school specialists
- 98% of workload is PreK-12 schools
- Staff of 84 with in-house services:
 - Pre-Referendum Planning
 - Facilities Master Planning
 - Architectural
 - Mechanical/ Electrical
 - LEED Certification
 - Technology
 - Site Development
 - Construction Administration
 - Interior Design
 - Specifications/ Quality Control
 - Total Energy Checkpoint
- National Exposure
 - School Experience Nationally and Internationally
 - CEFPI-AASA-ASBO-NSBA-ITTE-CSI-NASSP
 - Recognized Presenters/Authors



District 303 Vision Statement

C.U.S.D 303
St. Charles School District

“The District 303 School Community empowers and inspires ALL to

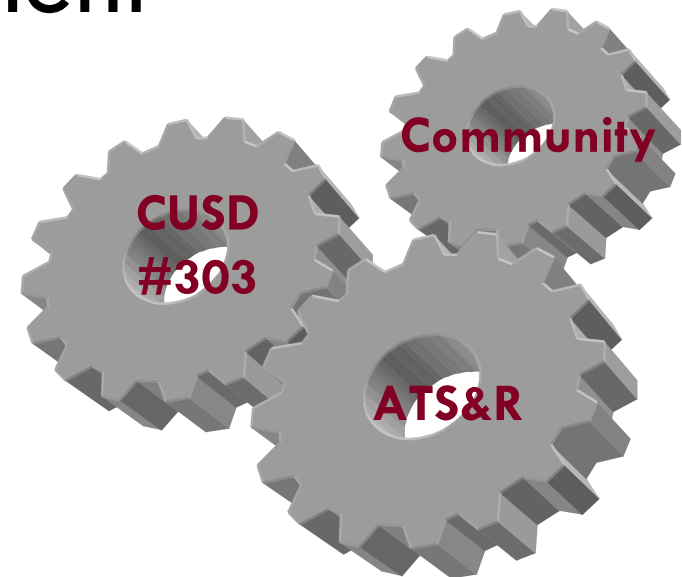
- Attain excellence
- Learn with passion, and
- Live with integrity in a changing world.”

Agenda...

- Introduction
- **Approach to Evaluation**
- Building utilization review
- Small group activity
- Reporting / Prioritization

Approach to Evaluation

- Comprehensive assessment of all schools
- Community group involvement
- Developing a Master Facilities Plan



St. Charles North High School

Develop a Master Facilities Plan

Providing a solid foundation for the Master Plan

- Supported by the assessment and community engagement process
- Responds to research on demographics, space, etc.
- Open, honest communication with the community
- Guide for planning and improvement projects for the next 20 years



STANDARDS - Elementary Schools



ROOM SIZES	Min	High				
Kindergarten Room	1,200	1,500	15 - 25	students	plus-	toilets
Classrooms	900	950	15 - 25	students		
Early Childhood	1,000	1,400	15 - 25	children	incl.-	toilet / coats
Special Education						
Small Group	450		5 - 8	students		
Classroom	800					
Lab	1,200					
Art (multi purpose CR / Lab)	1,000	1,500				
Music (General)	1,000	1,500				
Physical Education (PE)	3,000	4,000				
Multipurpose room	1,700					
Adaptive PE	500					
PE storage	300					
Learning Resource Center						
Reading (w/ comp. resource)	2,800	3,650	350 - 600	students		
Support	600					
Computer Lab	1,000	1,200	20 - 30	students		
Food Service						
Dining	2,000	3,400	350 - 600	students	3 periods	
Kitchen	500	1,000			serving -	minor prep
Support	1,300	2,200				
Student Services (Admin / Staff)	2,700	3,100	350 - 600	students		
Resource / Support						
Small Group	150	200	5 - 10	students		
Large Group	600	1,500	60 - 125	students		

SITE SIZES	Min	High				
Site (acres) 5 +1/100 students	9	11	350 - 600	students		
Site (acres) 10-15 +1/100 students (plus ROW, wetlands, retention, on site water or septic systems)	14	21	350 - 600	students		

EXPECTATIONS - All Schools

Safety:

Clear separation of bus / staff / visitor / walker site circulation
Site lighting

Security:

Active / passive systems
Controlled access entry / community use zone (s)

Accessibility:

ADA access to all teaching stations, community, staff areas
Appropriate special services rooms

Building:

Natural light to Classrooms
Appropriate type / size of teaching stations (Flexibility)
Core capacity to match building capacity

Ventilation:

Code required (+/- 12-15) CFM per person

Electrical:

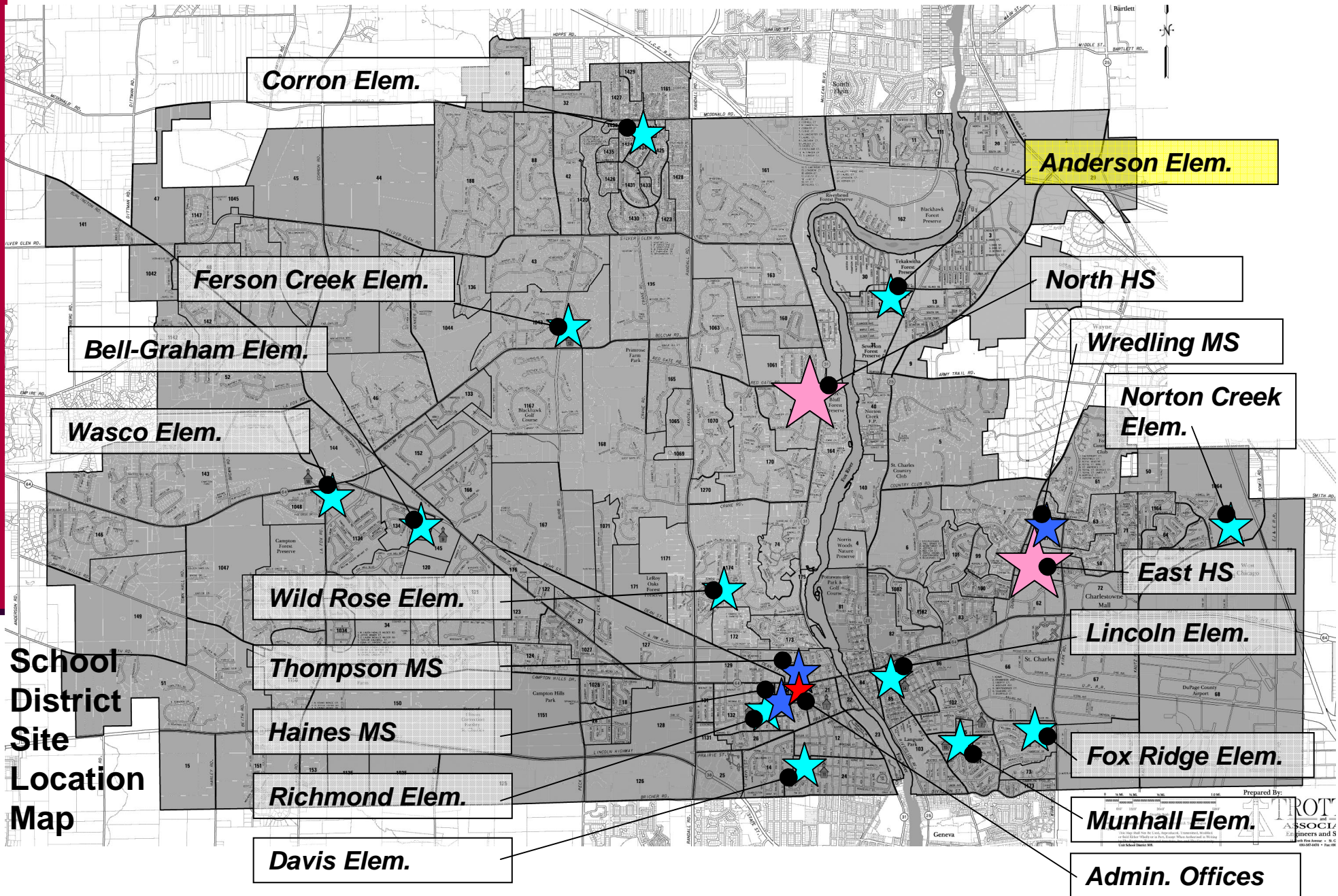
Properly sized electrical to support needs of site and building

Technology:

Appropriate Voice / Video / Data systems

Agenda...

- Introduction
- Approach to Evaluation
- **Building utilization review**
- Small group activity
- Reporting / Prioritization



Anderson Elementary School



Site Plan

Feb 15 2008

Anderson Elementary School

SITE:

10.3 Acres

SCP guidelines:
5-11 acres

BUILDING:

58,821 sf

496 Students

119 sf / student

MDE guidelines:
110-135 sf / student

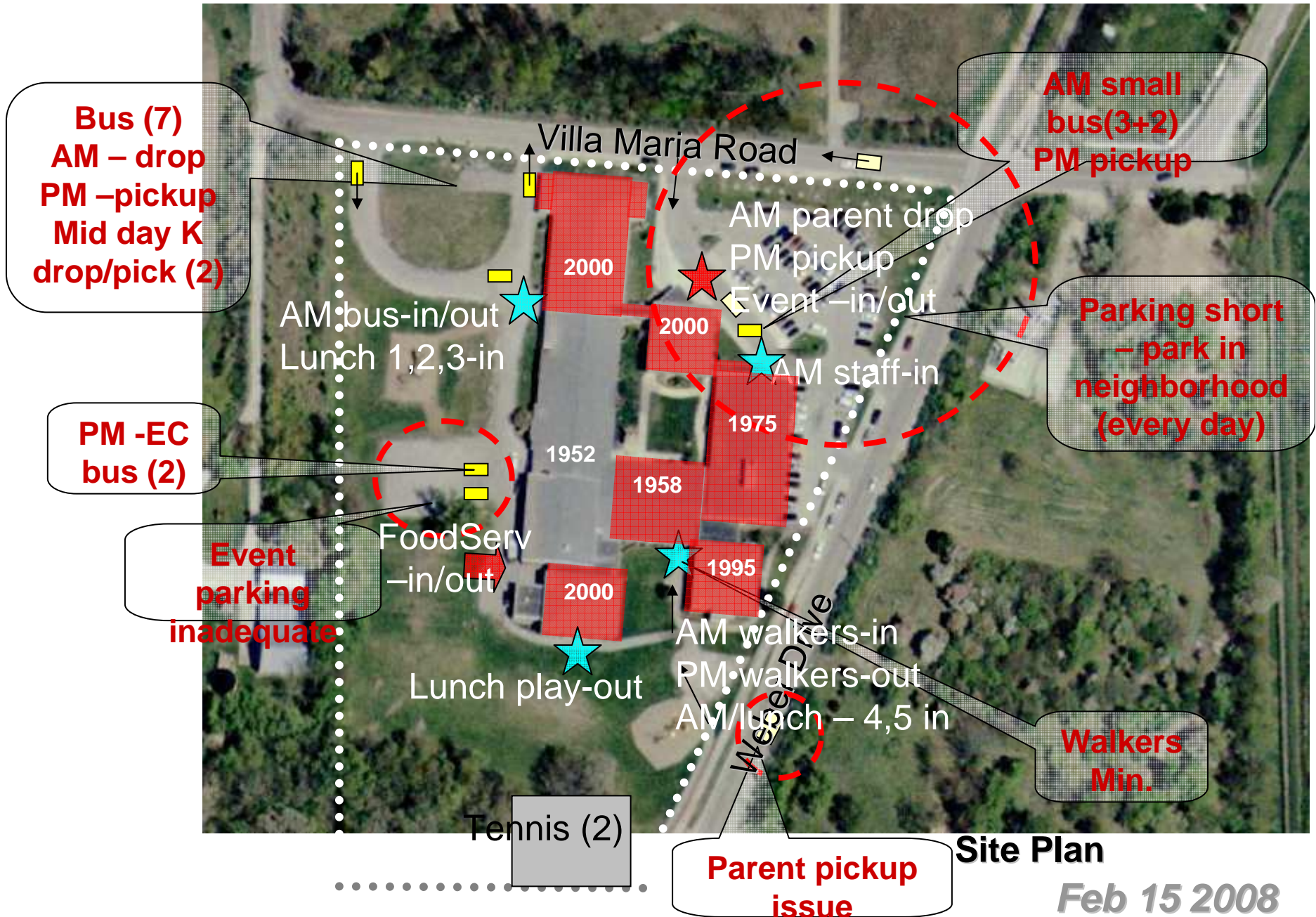
Built – 1952
Add'n – 1958
1975
1995
2000



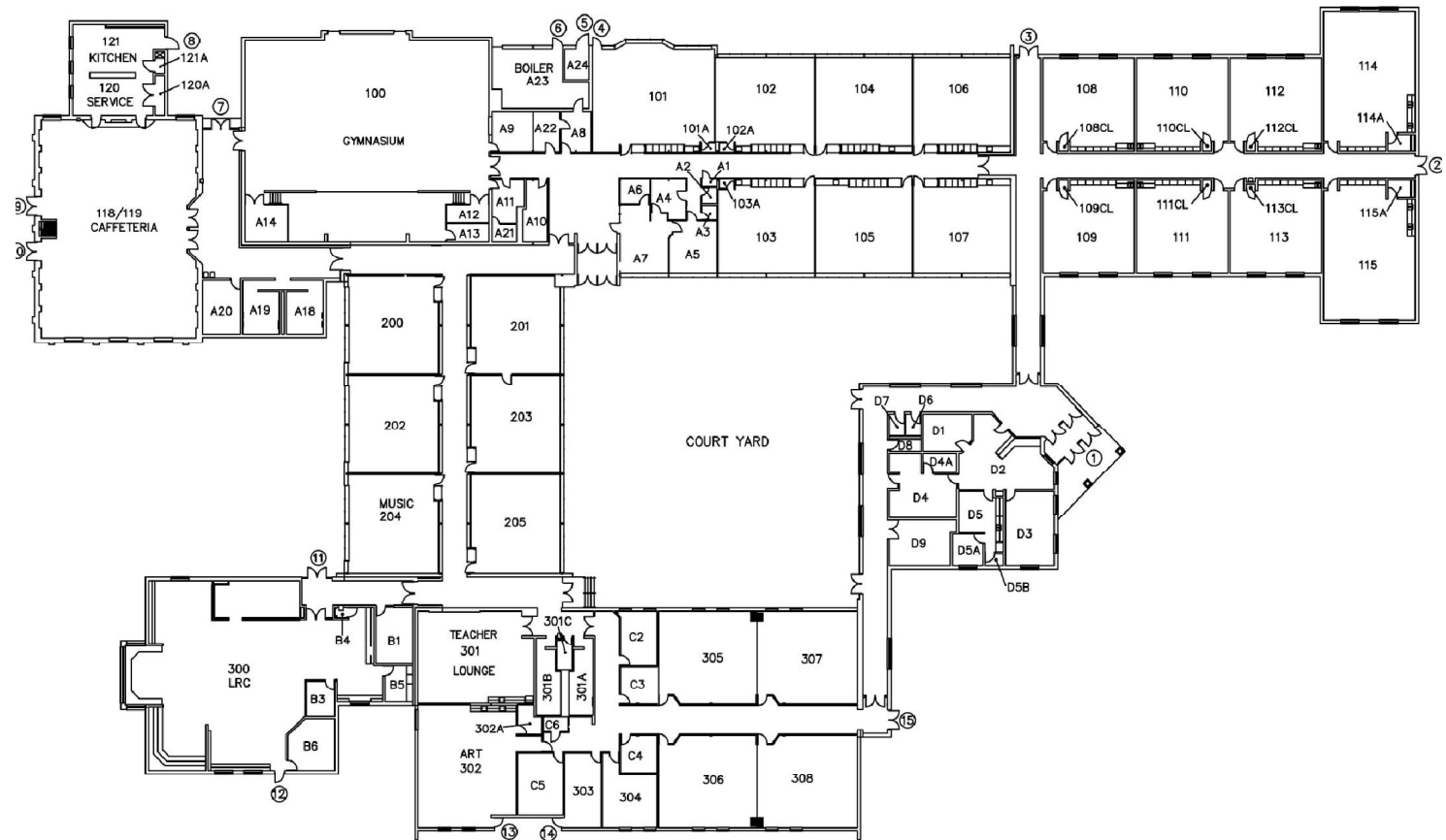
Site Plan

Feb 15 2008

Anderson Elementary School



Anderson Elementary School



Main Floor

Feb 15 2008

Anderson Elementary School

PK-5 (3+ Sec):
 K / EC / PK 4
 Grades 1-5 17
 21

3 sec -K

-  KINDERGARTEN
-  CLASSROOM
-  SPECIAL SERVICES
-  SCIENCE
-  ART
-  MUSIC
-  AUDITORIUM / STAGE
-  P.E.
-  LRC / COMP LAB
-  ADMIN./ GUID./ NURSE
-  FOOD SERVICE
-  CENTER BASED / SAC
-  MECH / ELEC
-  DISTRICT
-  LARGE / SMALL GROUP



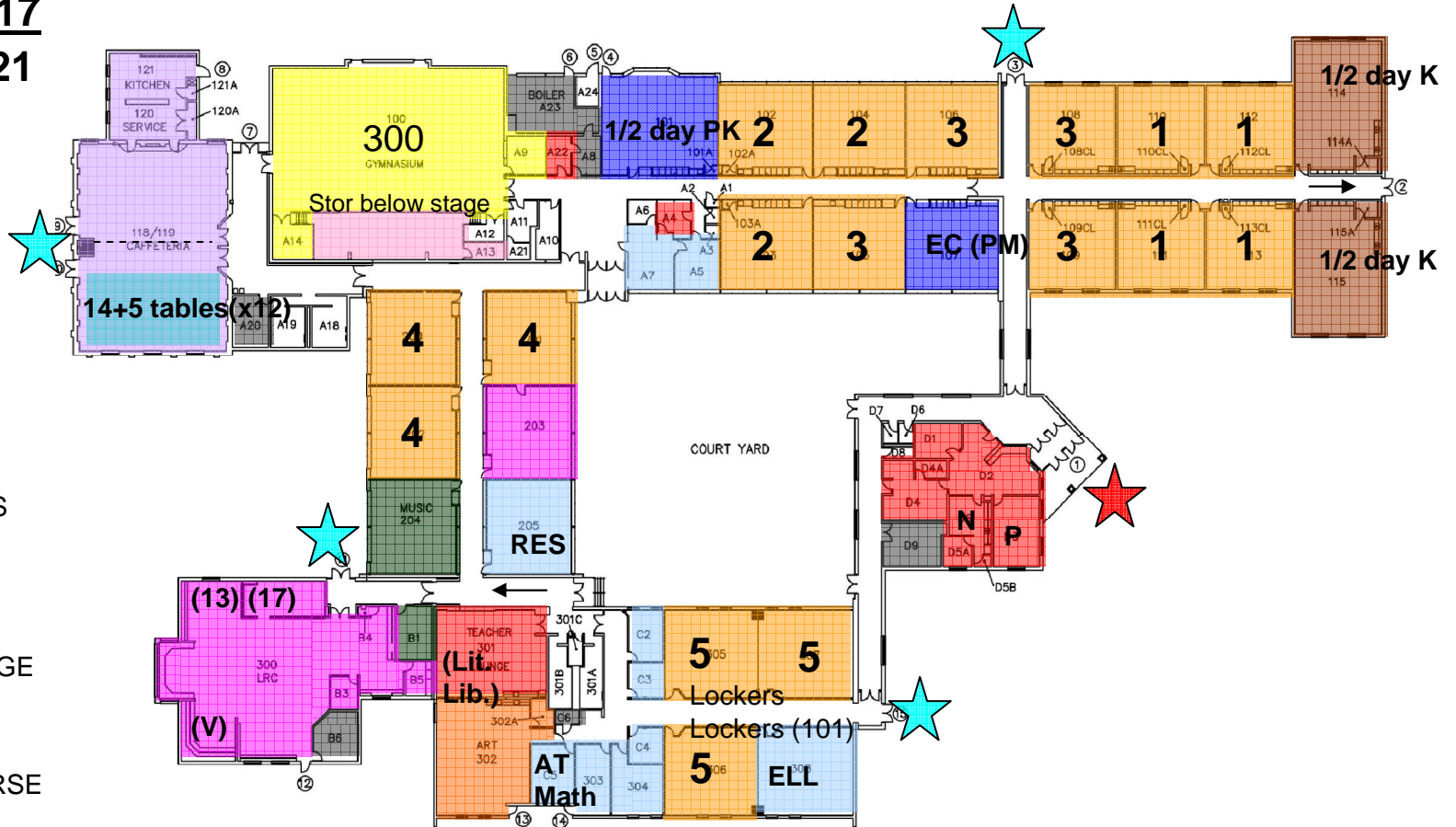
Main Floor

Feb 15 2008

Anderson Elementary School

PK-5 (3+ Sec):
 K / EC / PK 4
 Grades 1-5 17
 21

3 sec -K

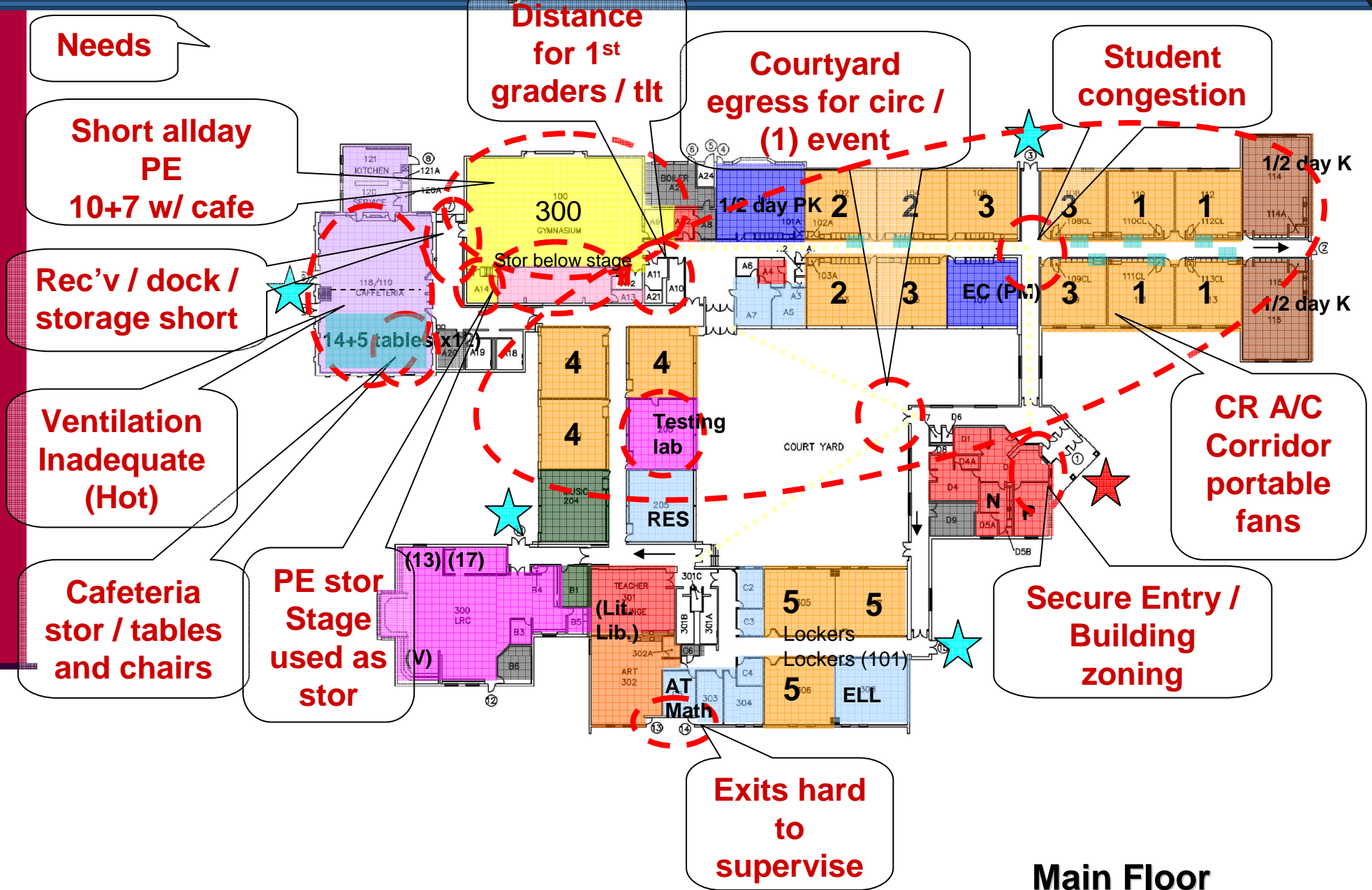


- KINDERGARTEN
- CLASSROOM
- SPECIAL SERVICES
- SCIENCE
- ART
- MUSIC
- AUDITORIUM / STAGE
- P.E.
- LRC / COMP LAB
- ADMIN./ GUID./ NURSE
- FOOD SERVICE
- CENTER BASED / SAC
- MECH / ELEC
- DISTRICT
- LARGE / SMALL GROUP

Main Floor

Feb 15 2008

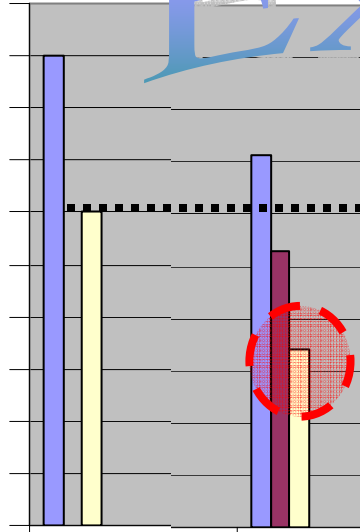
Anderson Elementary School



KINDERGARTEN ROOMS

Square Footage

1,600
1,500
1,400
1,300
1,200
1,100
1,000
900
800
700
600



MDE

Davis (K-5)

Example

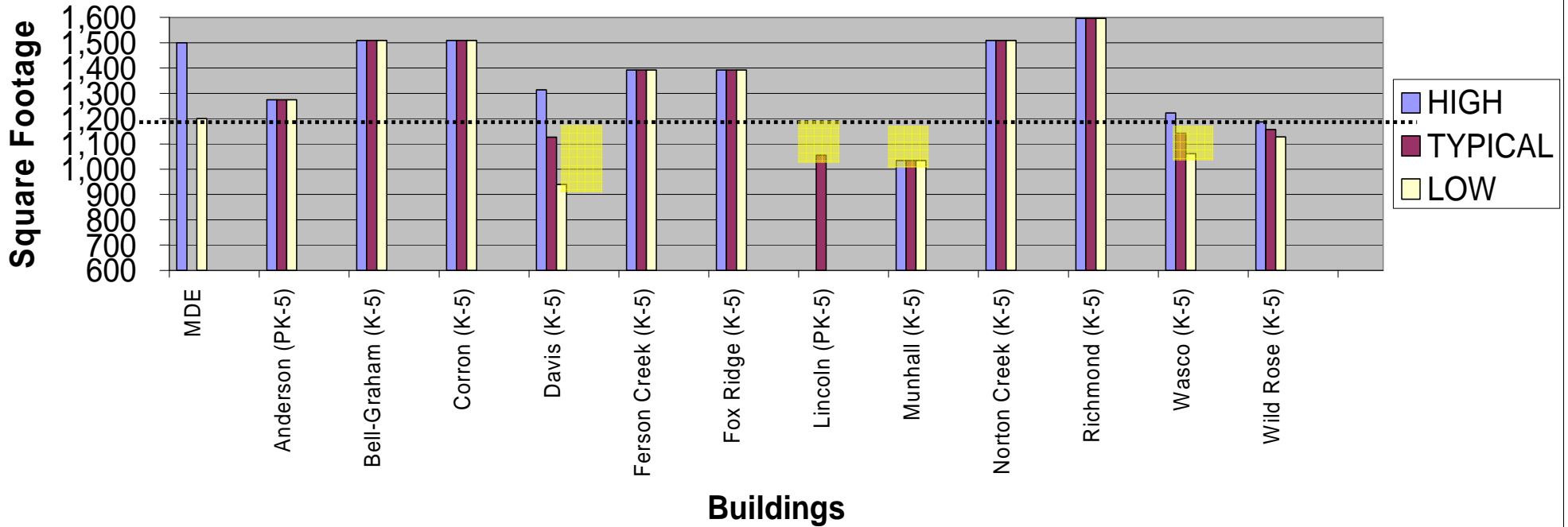
HIGH
TYPICAL
LOW

	Corcoran (K-5)	Davis (K-5)	Ferson Creek
HIGH	1,509	1,314	1,392
TYPICAL	1,509	1,127	1,392
LOW	1,509	940	1,392
1,200 sf or large	2 1,509	1 1,314	2 1,392
Less than 1,200 s		1 940	
TOTAL	2 3,018	2 2,254	2 2,784

KINDERGARTEN ROOMS- ELEMENTARY SCHOOLS

	MDE	Anderson (PK-5)	Bell-Graham (K-5)	Corron (K-5)	Davis (K-5)	Ferson Creek (K-5)	Fox Ridge (K-5)	Lincoln (PK-5)	Munhall (K-5)	Norton Creek (K-5)	Richmond (K-5)	Wasco (K-5)	Wild Rose (K-5)															
HIGH	1,500	1,274	1,509	1,509	1,314	1,392	1,392		1,035	1,509	1,596	1,223	1,187	-														
TYPICAL	1,274	1,274	1,509	1,509	1,127	1,392	1,392	1,055	1,035	1,509	1,596	1,142	1,158	#DIV/0!														
LOW	1,200	1,274	1,509	1,509	940	1,392	1,392		1,035	1,509	1,596	1,061	1,128	-														
	2	2	2	2	1	2	2			2	2	1		16.0														
					1			1	2			1	1	7.0														
TOTAL	2	2,548	2	3,018	2	3,018	2	2,254	2	2,784	2	2,784	1	1,055	2	2,070	2	3,018	2	3,192	2	2,284	2	2,315	0	-	totals	23.0

KINDERGARTEN ROOMS



St Charles District 303

CLASSROOMS— ELEMENTARY SCHOOLS

MDE	Anderson (PK-5)	Bell-Graham (K-5)	Corron (K-5)	Davis (K-5)	Ferson Creek (K-5)	Fox Ridge (K-5)	Lincoln (PK-5)	Munhall (K-5)	Norton Creek (K-5)	Richmond (K-5)	Wasco (K-5)	Wild Rose (K-5)
950	966	908	908	975	998	998	740	1,053	908	951	944	882
	913	880	880	940	959	997	706	875	880	927	836	803
900	870	870	870	854	598	992	695	751	870	903	752	731

1	966							1,053				
2	944							975				
5	940							940		3	951	4
3	914	5	908	5	908	10	975	5	994	4	940	2
						4	940	1	992	1	936	1
										6	940	2
										6	903	1
									5	908		

900 sf or larger
Less than 900 sf

6	870	15	870	14	870	2	894	2	598															
						3	854																	
										1	740	2	825	14	870						4	830	2	882
										1	721	3	801								1	758	8	873
										4	705	4	751								7	752	3	742
										4	695											7	738	1
																					1	731		731

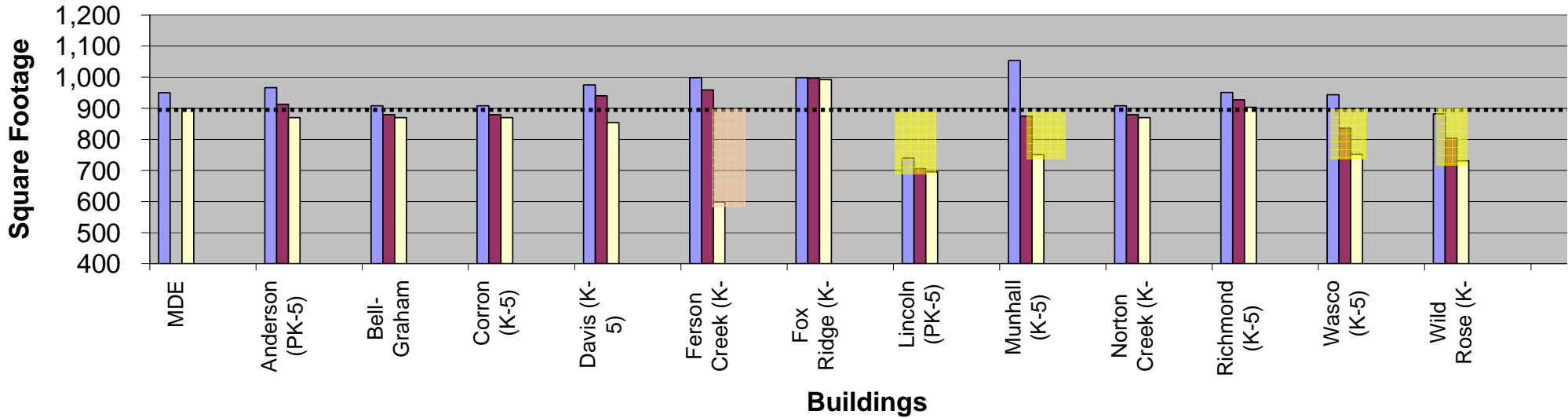
mobile

900 sf or larger
Less than 900 sf

11	5	5	14	19	18	0	10	5	15	7	0	0														
6	15	14	5	2	0	10	9	14	0	12	21	0														
TOTAL	17	15,516	20	17,590	19	16,720	19	17,860	21	20,132	18	17,942	10	7,061	19	16,624	19	16,720	15	13,911	19	15,884	21	16,871	0	-

totals
109.0
108.0
217.0

CLASSROOMS

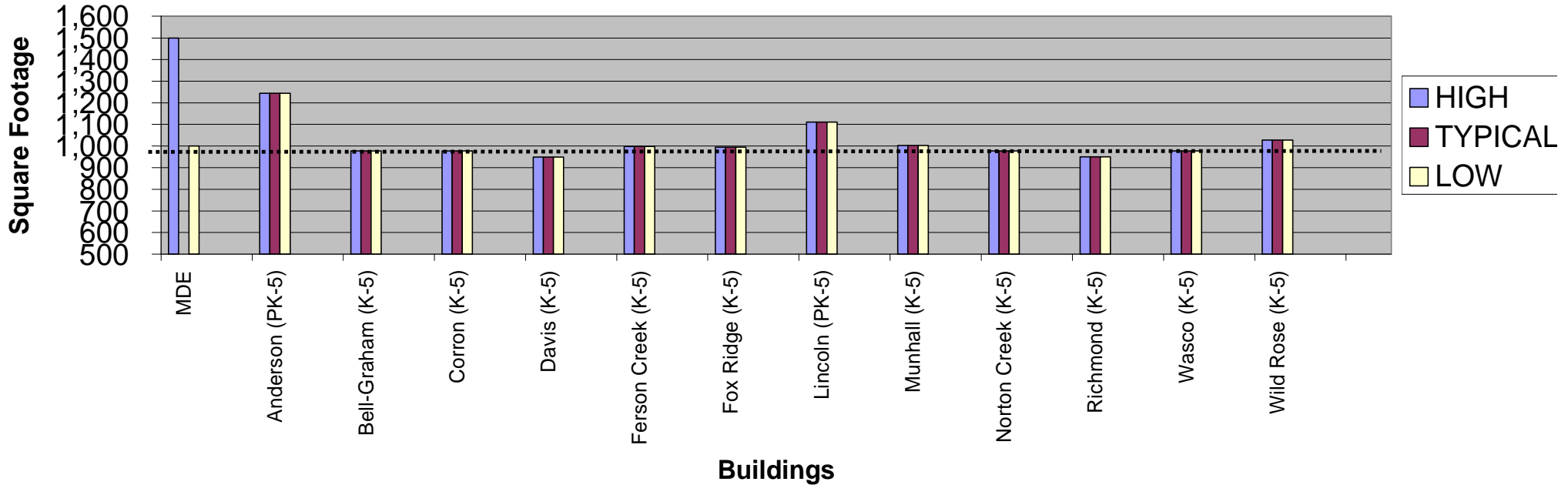


NOTES: Willow Creek Art room used as a classroom (1137 sf)

ART ROOMS – ELEMENTARY SCHOOLS

	MDE	Anderson (PK-5)	Bell-Graham (K-5)	Corron (K-5)	Davis (K-5)	Ferson Creek (K-5)	Fox Ridge (K-5)	Lincoln (PK-5)	Munhall (K-5)	Norton Creek (K-5)	Richmond (K-5)	Wasco (K-5)	Wild Rose (K-5)													
1,500	1,244	978	978	949	998	994	1,111	1,003	978	951	978	1,028	-													
1,000	1,244	978	978	949	998	994	1,111	1,003	978	951	978	1,028	#DIV/0!													
1,000 sf or larger	1	1,244					0.5	1,111	1	1,003			1	1,028												
Less than 1,000 sf			1	978	1	978	1	949	1	998	1	994														
TOTAL	1	1,244	1	978	1	978	1	949	1	998	1	994	1	556	1	1,003	1	978	1	951	1	978	1	1,028	0	-

ART / PROJECT



TES:

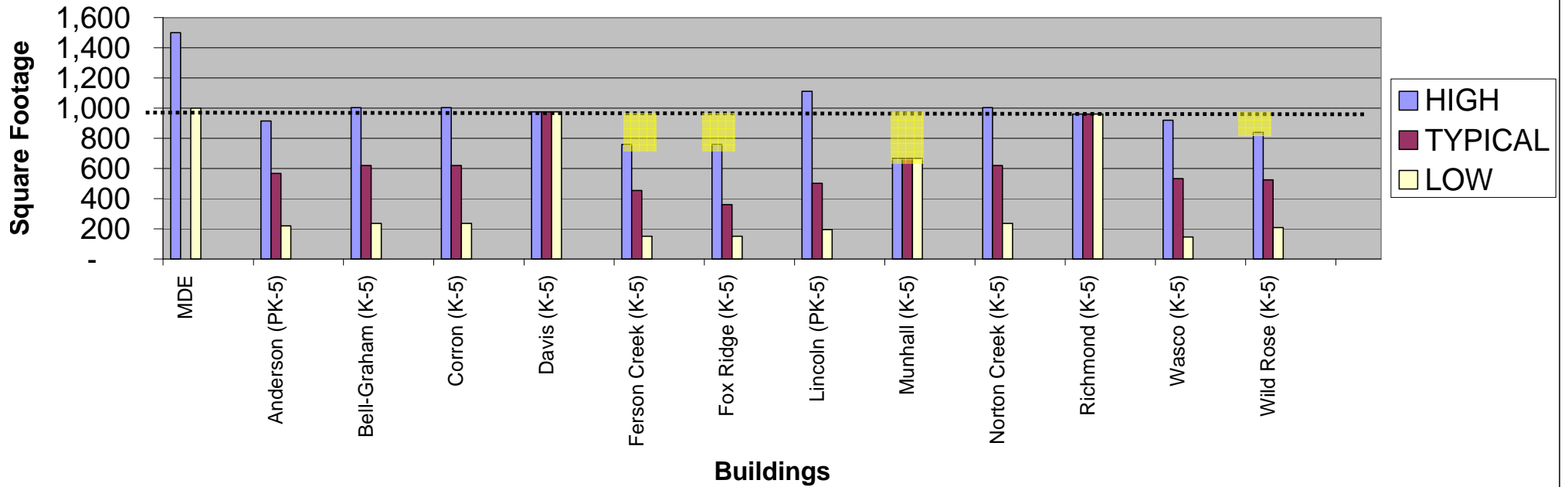
. Lincoln Art room shared with Music

St Charles District 303

MUSIC ROOMS – ELEMENTARY SCHOOLS

	MDE	Anderson (PK-5)	Bell-Graham (K-5)	Corron (K-5)	Davis (K-5)	Ferson Creek (K-5)	Fox Ridge (K-5)	Lincoln (PK-5)	Munhall (K-5)	Norton Creek (K-5)	Richmond (K-5)	Wasco (K-5)	Wild Rose (K-5)													
1,500	914	1,003	1,003	975	759	759	1,111	667	1,003	960	919	840	-													
	567	620	620	975	455	361	500	667	620	960	532	524	#DIV/0!													
1,000	219	236	236	975	150	150	195	667	236	960	145	208	-													
1,000 sf or larger		1	1,003	1	1,003			0.5	1,111	1	1,003															
Less than 1,000 sf	1	914	1	236	1	975	1	759	1	173	1	195	1	667	1	960	1	919	1	145	1	840	1	208		
	1	219	1	236	1	236	1	150	1	150	1	236	1	236	1	236	1	236	1	236	1	236	1	236		
TOTAL	2	1,133	2	1,239	2	1,239	1	975	2	909	3	1,082	2	751	1	667	2	1,239	1	960	2	1,064	2	1,048	0	-

MUSIC



TES: . Lincoln Art room shared with Music

St Charles District 303

Agenda...

- Introduction
- Approach to Evaluation
- Building utilization review
- **Small group activity**
- Reporting / Prioritization

Main themes from groups at Summit 303 meeting on facilities (Mar 13)

- Safety and Security
- Increase Classrooms / class size - crowding
- Indoor air quality
- ADA / accessibility
- Space for programs / future needs

Your Input...

- List the sources of pride and strengths of **Anderson Elementary School.**

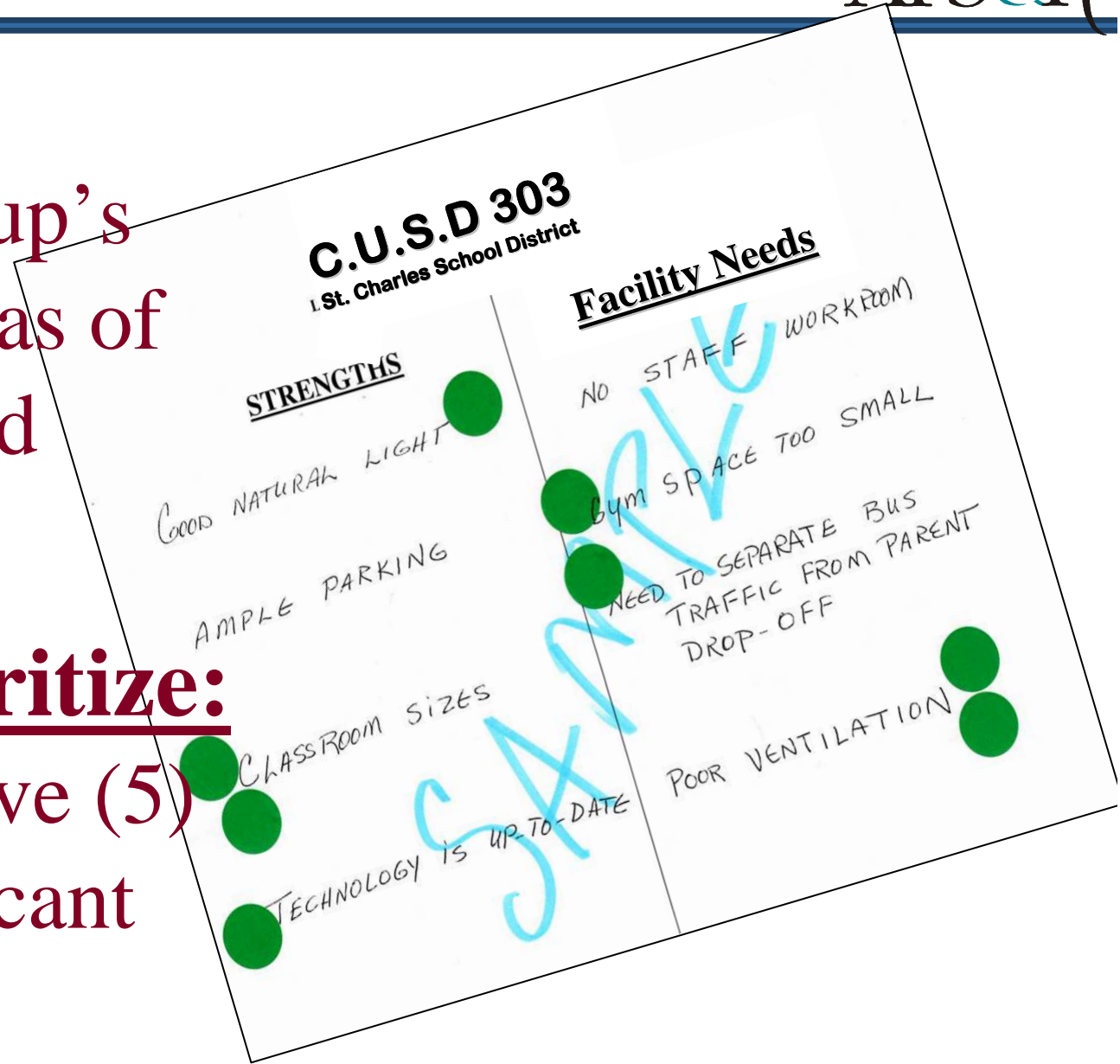
- List **facility** improvements (needs) that should be made for **Anderson Elementary School.**

Record:

All of the group's reported areas of strengths and needs.

Group Prioritize:

Identify the five (5) most significant needs.



List the sources of pride and strengths of Anderson Elementary School

- Courtyard
- Circular building layout
- Size of classrooms
- Proximity of forest preserve

Identify the top 5 facility improvements/ needs that should be made for Anderson Elementary School

1. Temperature regulations / difficult to control building wide (9)
2. Air conditioning (9)
3. Poor water pressure / water quality – No city water, on a well, no back up system for well/pump (7)
4. Parent drop off – Lack of space/flow concerns (6)
5. Additional Parking / site lighting (5)

(the number in parenthesis () indicates the number of votes received during the prioritization process)

Other:

- Toilet rooms closer to 1st grade (4)
- Additional storage building wide (0)
- Controlled access (0)

(the number in parenthesis (__) indicates the number of votes received during the prioritization process)

Thank You...